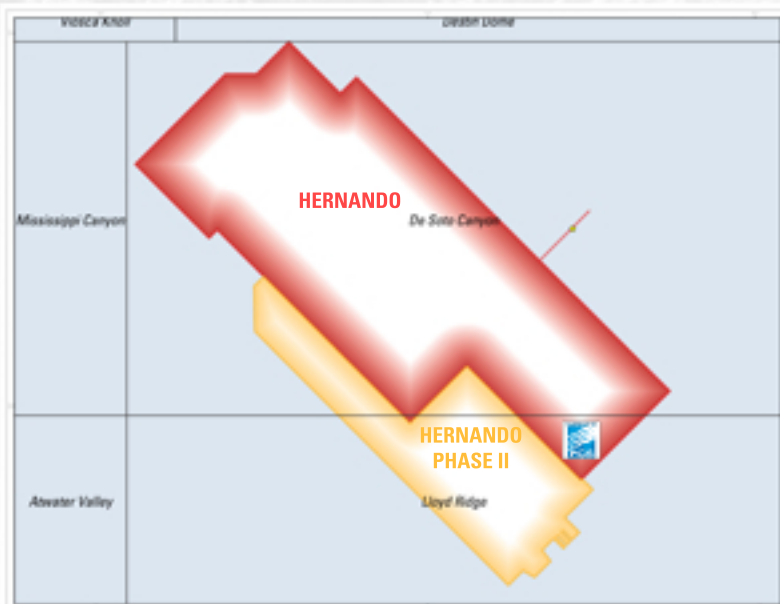
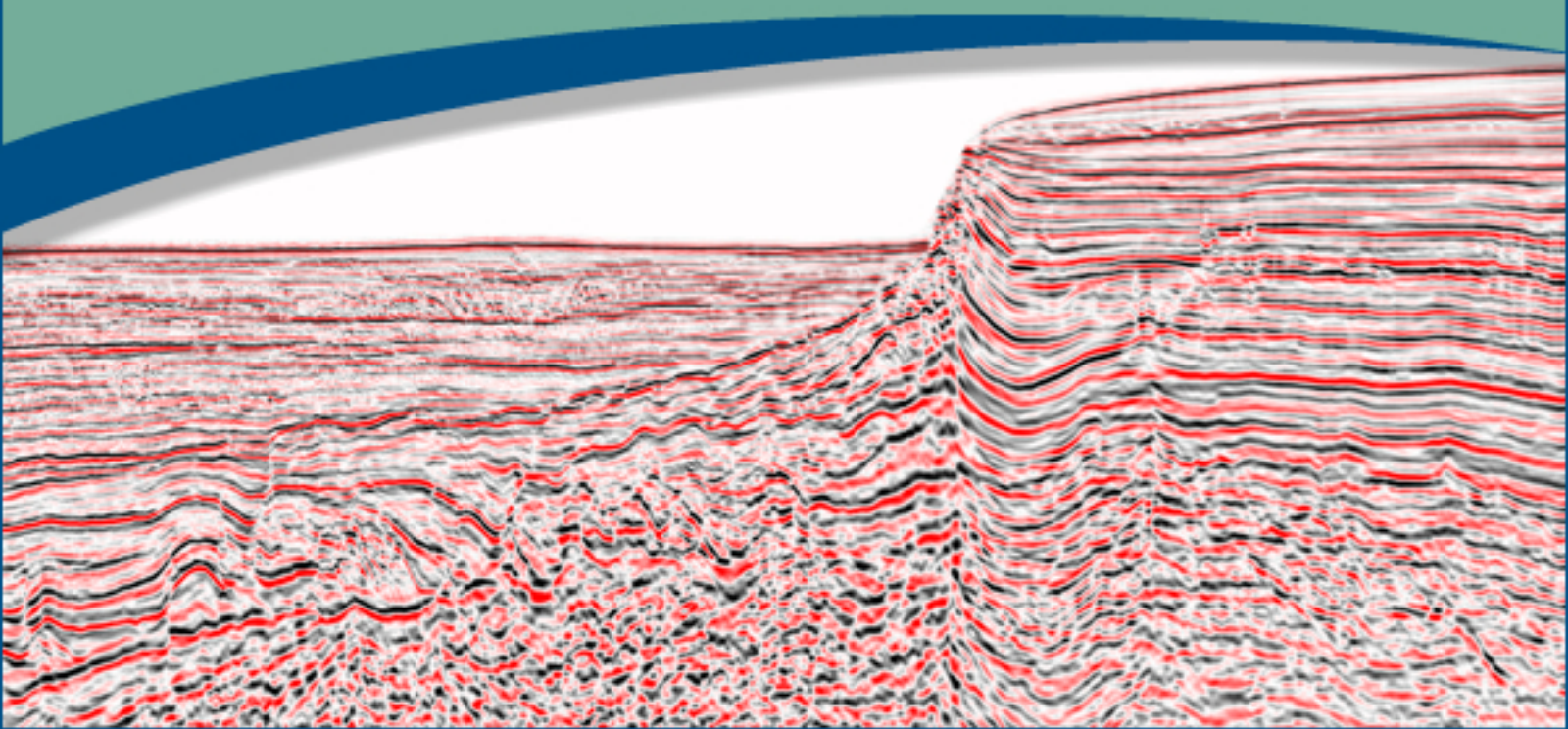


Explore the Eastern Central Gulf of Mexico with Hernando 3D



TGS has completed the Hernando 3D Phase 1 and Phase 2 projects. TGS' new data provides insight into the deeper structures and shows better structural continuity under the Florida escarpment.

- Anisotropic PSDM tied to the best available well data
- Full azimuth tomography
- Phase 1: 365 OCS blocks
- Phase 2: 114 OCS blocks
- PSTM available
- PSTM and PSDM migrated gathers available for AVO analysis

For a data showing please contact your TGS sales representative at 713 860 2100 or NSA@tgsnopec.com.



Geophysical
Products



Geological
Products



Imaging
Services

