



**NIGERIAN UPSTREAM
PETROLEUM REGULATORY
COMMISSION**

Nigeria 2025

Bid Round

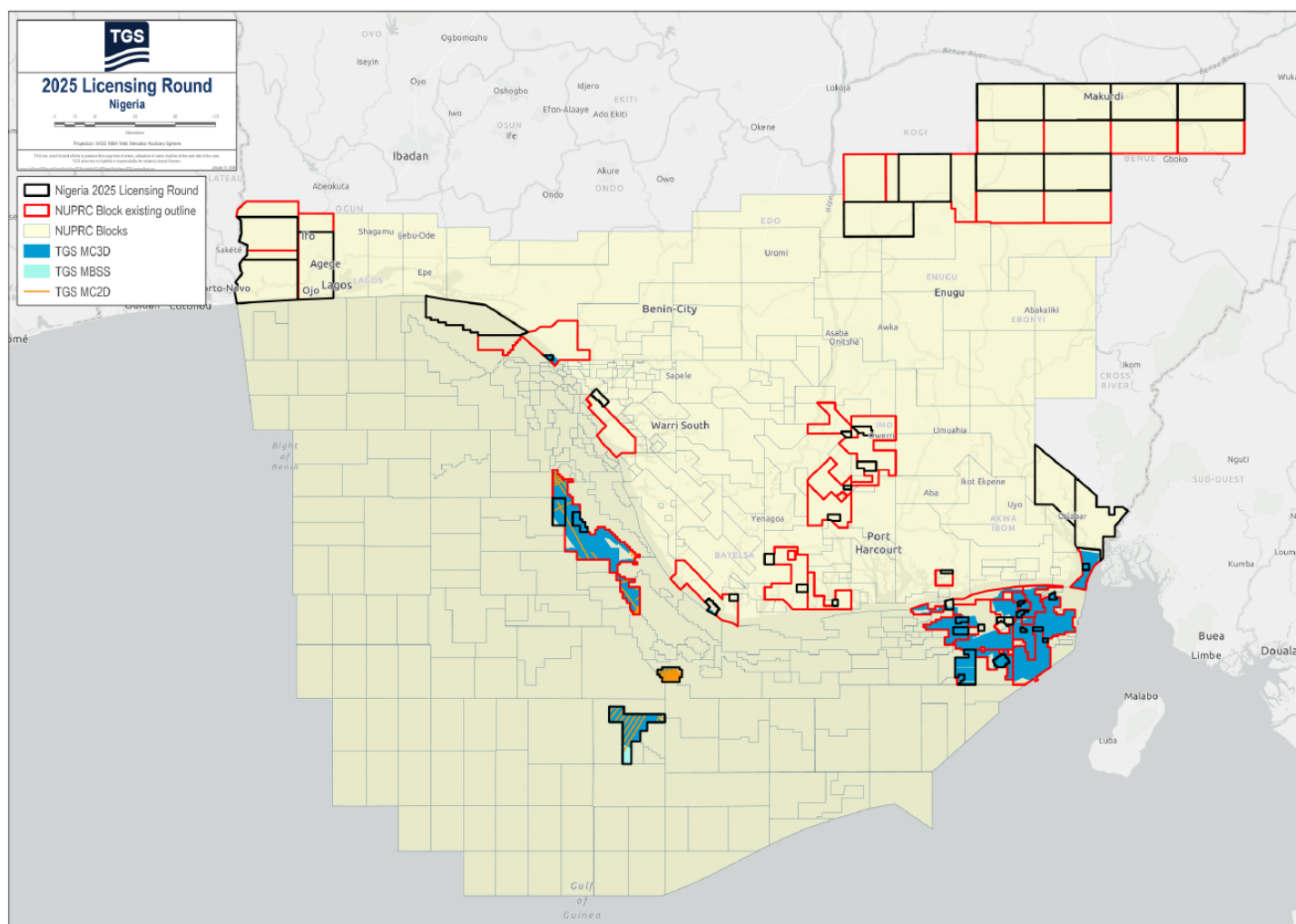
PPL - 2010

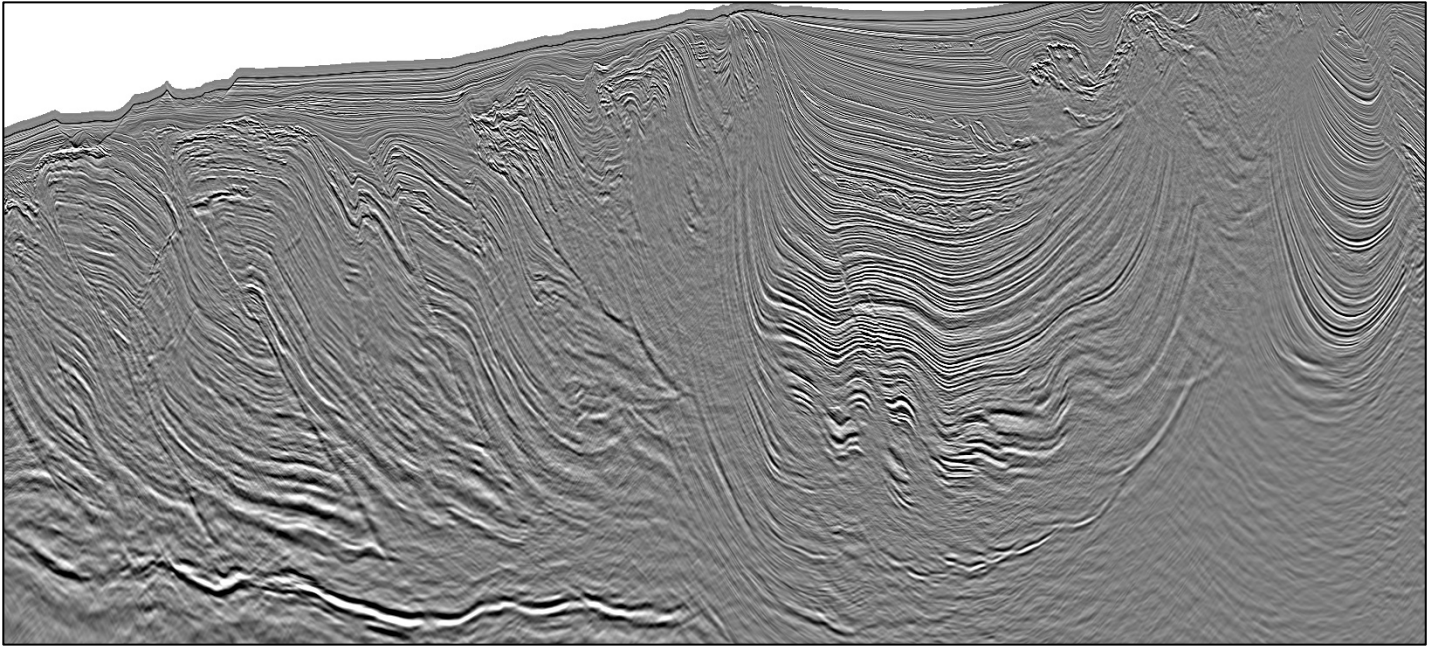
Nigeria 2025 License Round Block Information Table



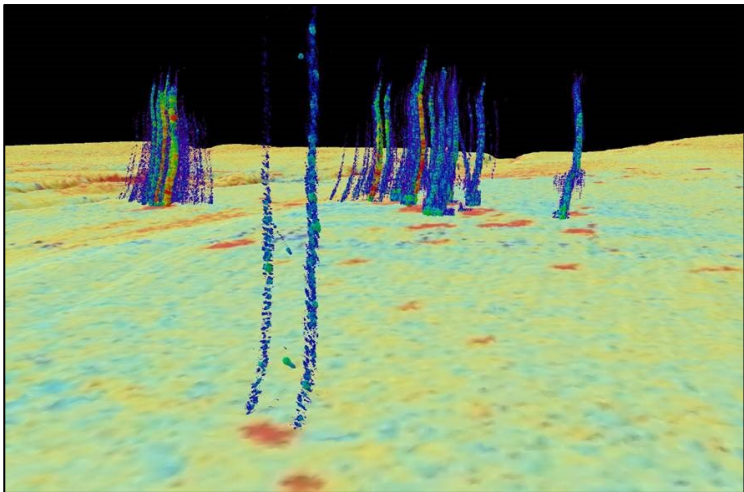
**NIGERIAN UPSTREAM
PETROLEUM REGULATORY
COMMISSION**

Block Name	Block sq. km	Data type	Data km 2D km/3D sq km	Wells	Water depth (m) min	Water Depth (m) max
PPL2010	642	2D/3D/MBSS	142/835/642	0	1000	2000





KPSDM 3D seismic data example from the newly acquired Awele survey showing stacked thrusts of the inner fold and thrust belt, complex shale-generated structures. FWI velocity modelling yields high resolution imaging of channels, faults and illuminates sub-thrust trapping geometries.



MBSS combines high resolution multi-beam with seabed sampling to reveal information on source rock depositional environments, geochemical characteristics and hydrocarbon potential of the deepwater Niger Delta.

Nigeria 2025 Bid Round

PPL - 2010



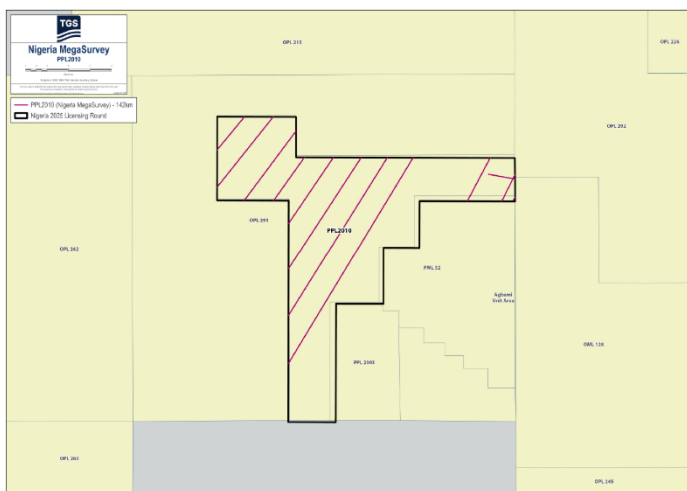
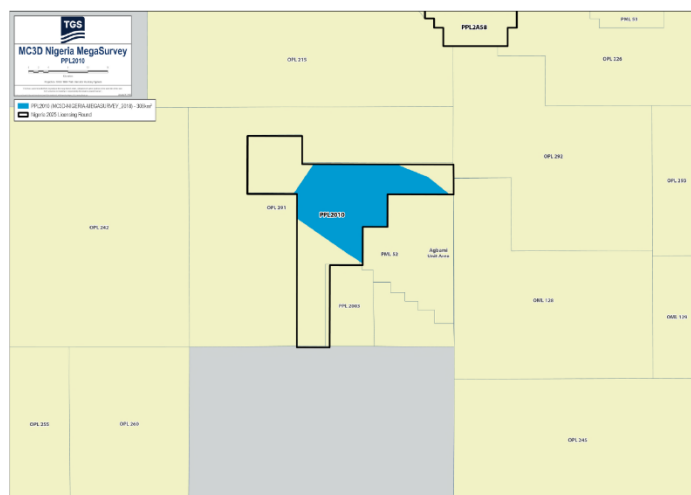
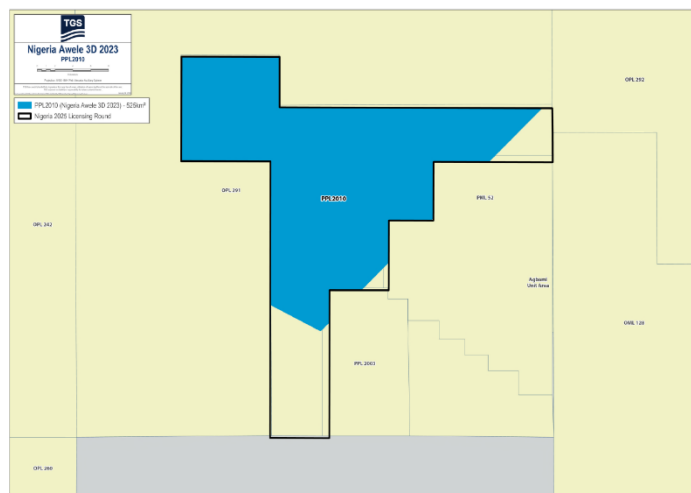
**NIGERIAN UPSTREAM
PETROLEUM REGULATORY
COMMISSION**

Block PPL-2010 covers an area of 642 sq. km. and is situated in water depths of ~1000-2000 m. The block contains 525 km² of PSDM coverage from the recently acquired Awele 3D dataset and is also underlain by 2 km² of conventional 2D and 308 km² of MegaSurvey legacy post-stack time data.

The block also has 142 line km of MegaSurvey 2D seismic data. The 2D coverage in this block includes multiple vintages of post-stack time data. The block is fully covered by the MBSS (642 sq km). All data was acquired in partnership with NUPRC.

Block PPL-2010 is located 8km west of the Agbami Field in the southeastern Niger Delta and 2km west of the Ikija-1 discovery. The block lies within the inner fold and thrust belt of the southeastern delta lobe, with thrust fronts trending W-E.

No wells have been drilled in PPL-2010. There is remaining potential within untested stratigraphic and structural-stratigraphic traps in the block.





NIGERIAN UPSTREAM PETROLEUM REGULATORY COMMISSION

For all enquires please
contact us at

**[AME-Nig-Br2025-
Sales@tgs.com](mailto:AME-Nig-Br2025-Sales@tgs.com)**