



**NIGERIAN UPSTREAM  
PETROLEUM REGULATORY  
COMMISSION**

# **Nigeria 2025**

## **Bid Round**

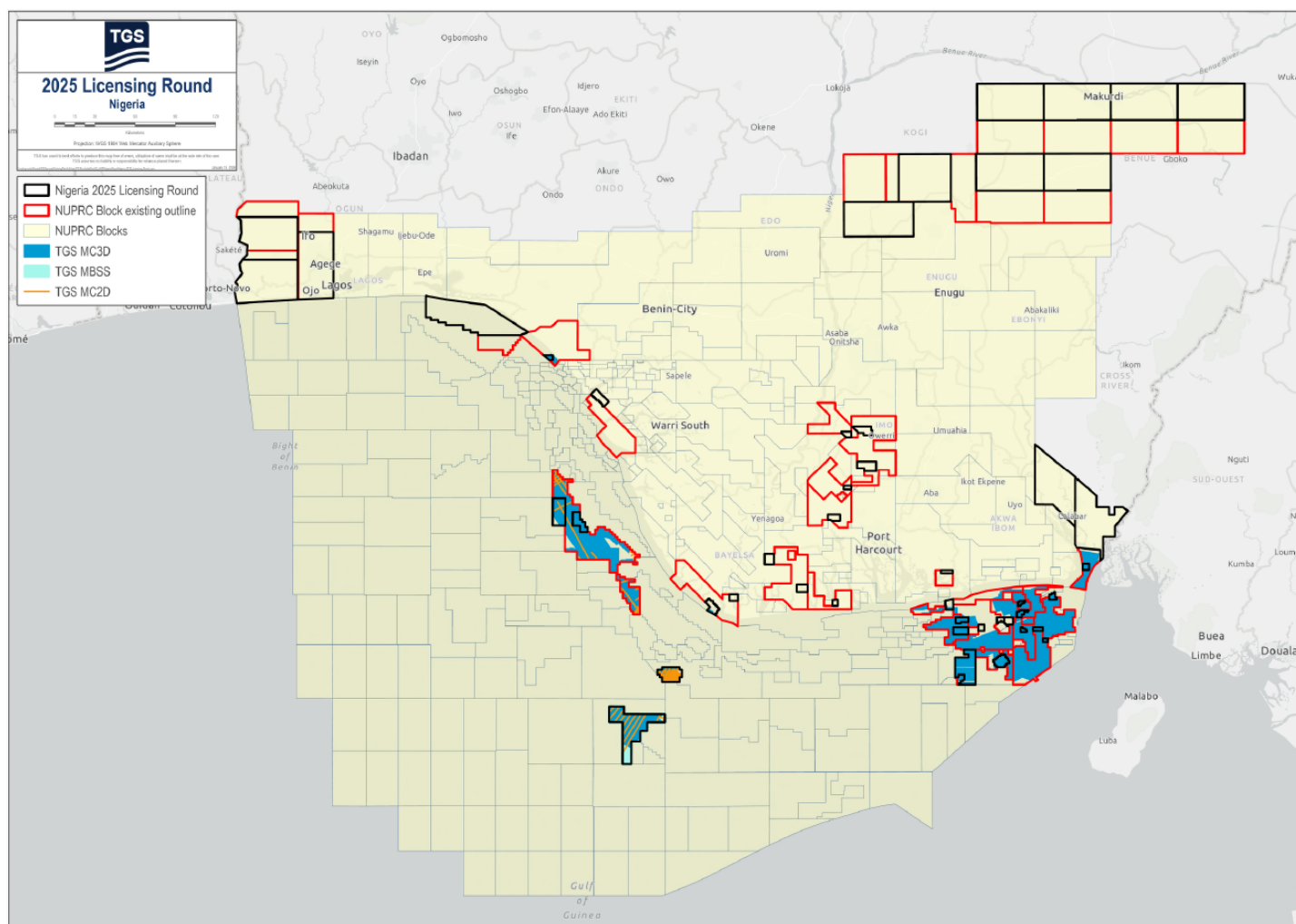
### **PPL – 2A31**

# Nigeria 2025 License Round Block Information Table



**NIGERIAN UPSTREAM  
PETROLEUM REGULATORY  
COMMISSION**

Block Name	Block sq. km	Data type	Data km 2D km/3D sq km	Wells	Water depth (m) min	Water Depth (m) max
PPL2A31	42	3D	158	1	12	12



# Nigeria 2025 Bid Round

## PPL – 2A31

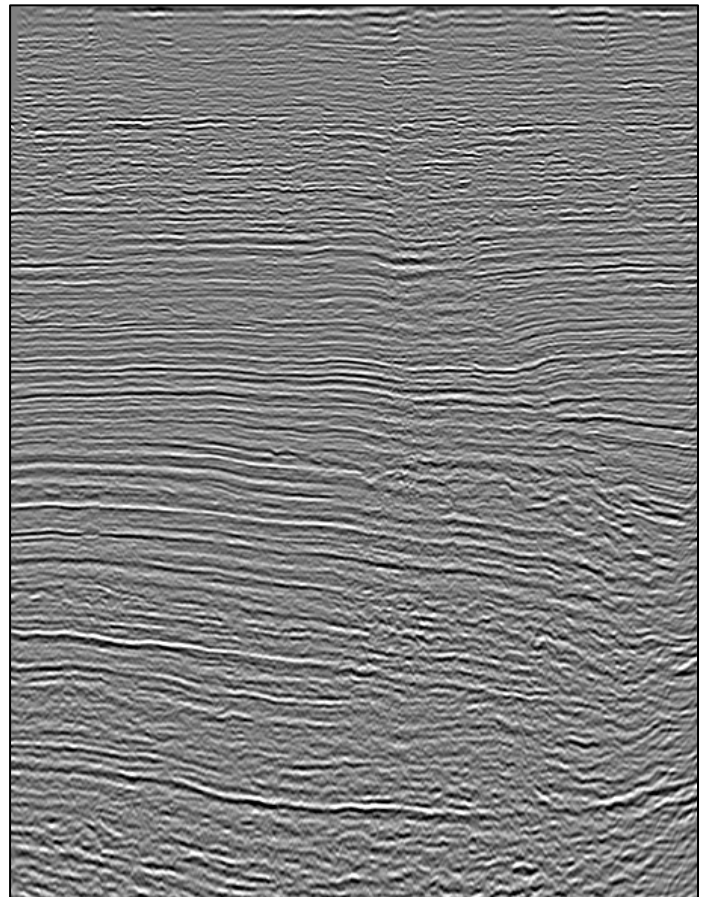
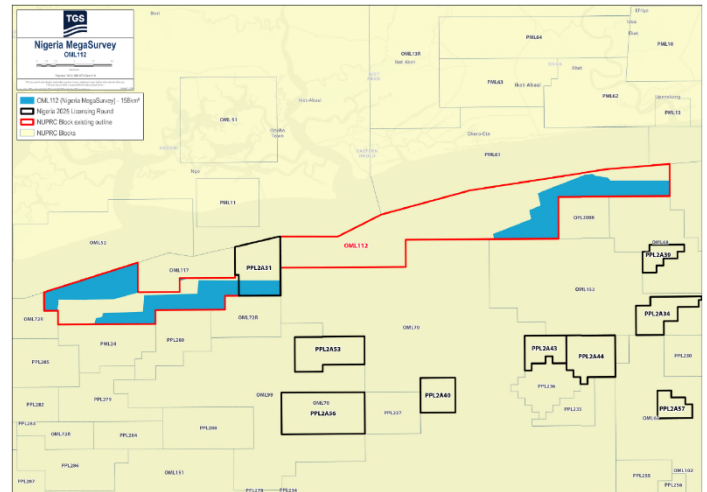


**NIGERIAN UPSTREAM  
PETROLEUM REGULATORY  
COMMISSION**

PPL 2A31 covers an area excised from OML 112 in accordance with the Petroleum Industry Act (PIA) 2021. PPL 2A31 is situated in Shallow Offshore Depobelt of the eastern Niger Delta sedimentary basin. The closest processing facility is Nsimbo Platform (ExxonMobil). There is 158 km<sup>2</sup> of MegaSurvey 3D over the entire OML112 area.

The Ikuru-1 well was drilled in water depth of 12m by Japan Petroleum Exploration Co. Ltd (JAPEX) between November 21, 1974, and January 15, 1975, to a total depth of 11,515 feet (MD). The well was drilled off structure and subsequently plugged and abandoned. OML 112 is currently operated by Amni International Petroleum.

Data example from the MegaSurvey3D showing extensional faulting and amplitude brightening potentially associated with hydrocarbons.





## **NIGERIAN UPSTREAM PETROLEUM REGULATORY COMMISSION**

For all enquires please  
contact us at

**[AME-Nig-Br2025-  
Sales@tgs.com](mailto:AME-Nig-Br2025-Sales@tgs.com)**