



**NIGERIAN UPSTREAM  
PETROLEUM REGULATORY  
COMMISSION**

# **Nigeria 2025**

## **Bid Round**

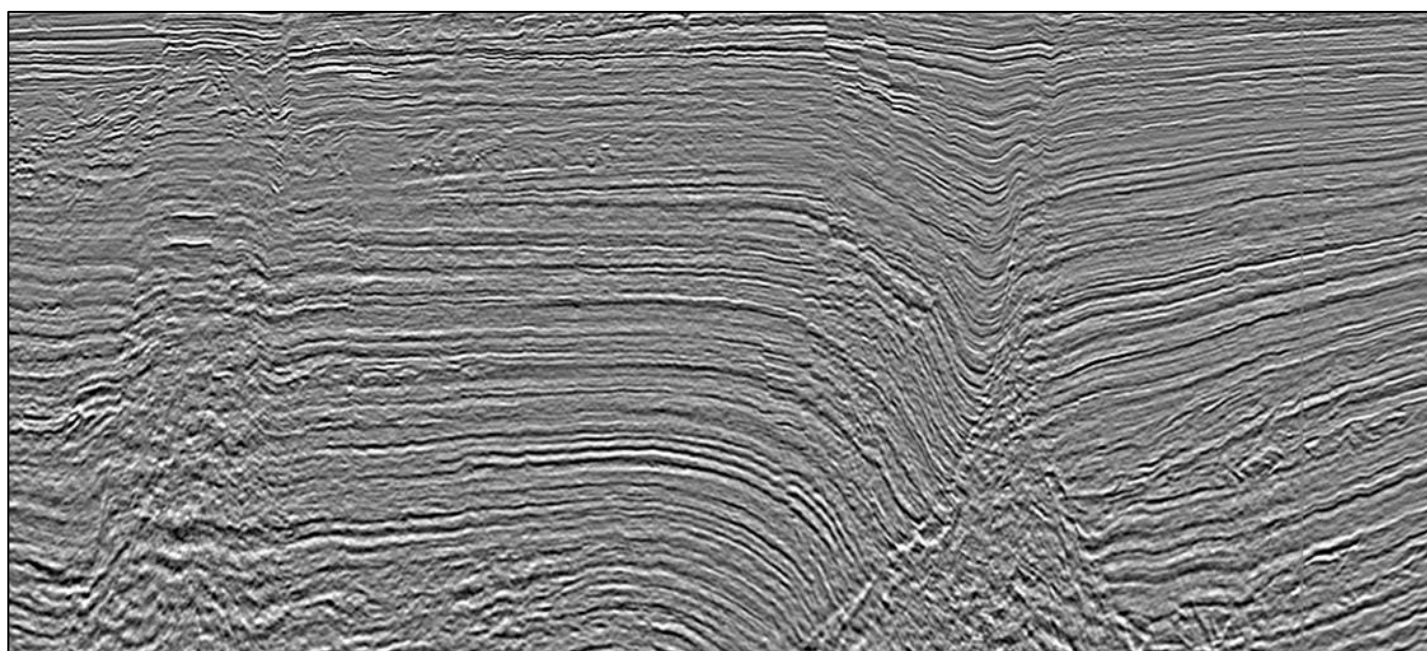
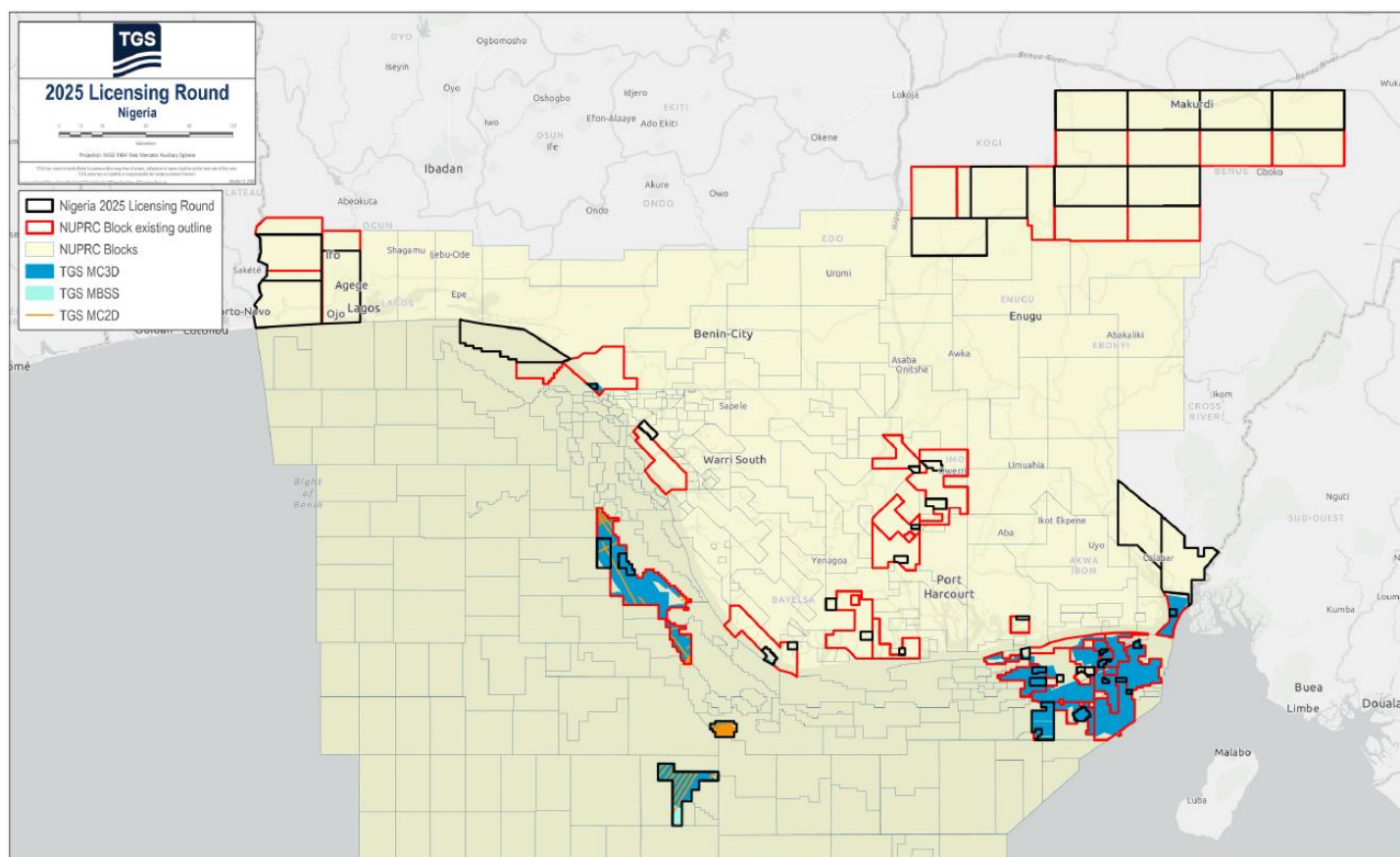
**PPL – 2A33**

# Nigeria 2025 License Round Block Information Table



**NIGERIAN UPSTREAM  
PETROLEUM REGULATORY  
COMMISSION**

Block Name	Block sq. km	Data type	Data km 2D km/3D sq km	Wells	Water depth (m) min	Water Depth (m) max
PPL2A33	188	2D/3D	222/2896	2	101	101



MegaSurvey 3D example from OML 136 showing a large roll-over anticline with extensional faulting

# Nigeria 2025 Bid Round

## PPL – 2A33

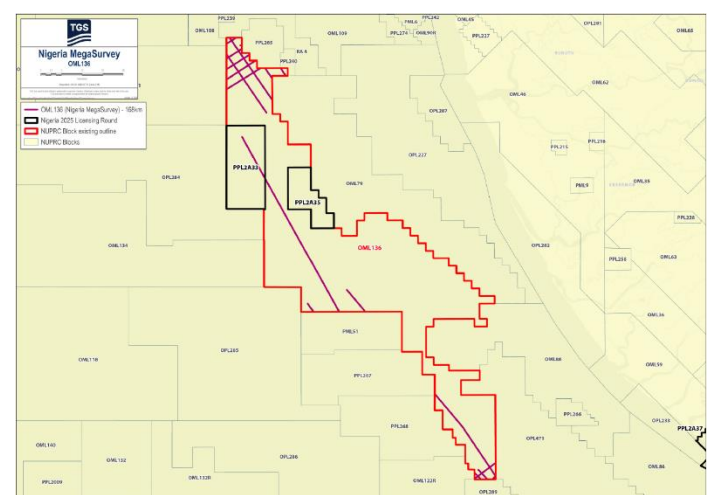
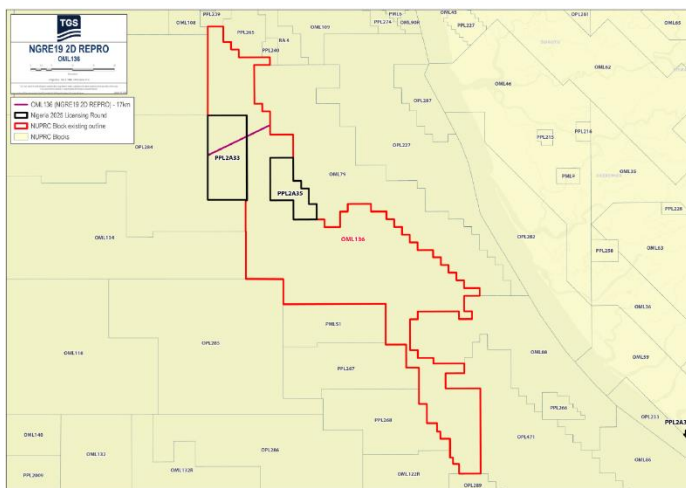
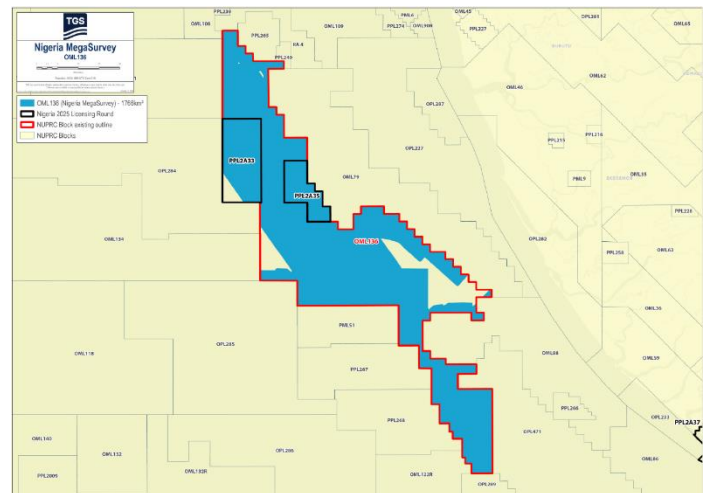
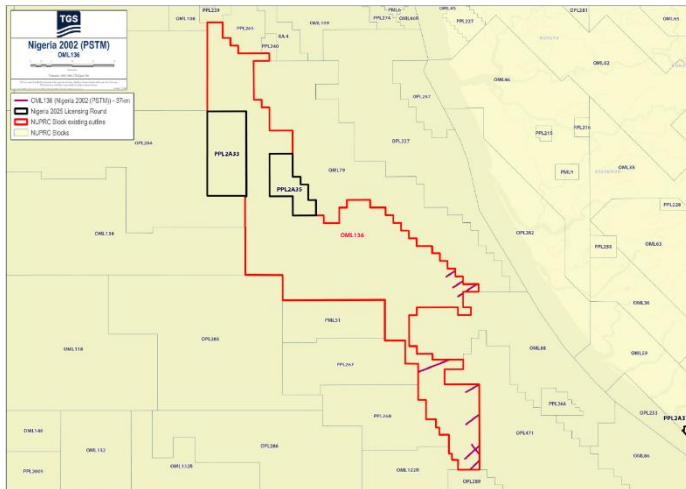
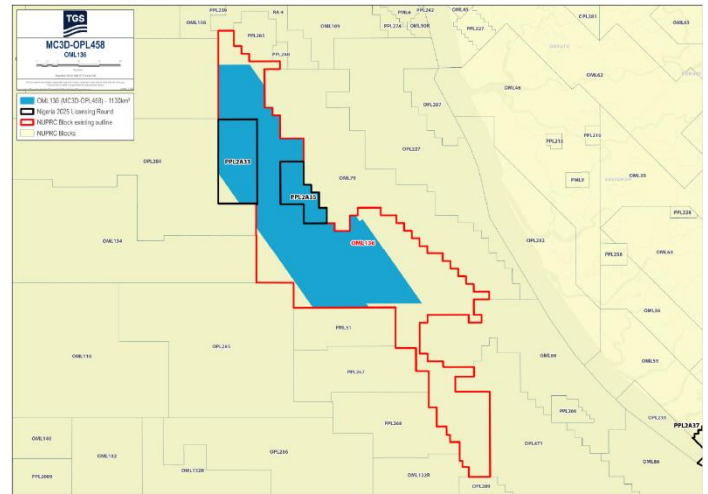


**NIGERIAN UPSTREAM  
PETROLEUM REGULATORY  
COMMISSION**

PPL 2A33 covers an area excised from OML 136 in accordance with the Petroleum Industry Act (PIA) 2021. PPL 2A33 is situated shallow offshore western Niger Delta sedimentary basin. The block is about 55 km west of the mouth of Forcados River.

Data coverage over the entire OML 136 block includes: 1766 km<sup>2</sup> of MegaSurvey 3D coverage, 1130 km<sup>2</sup> of conventional 3D, 168 line km of MegaSurvey 2D, 37 line km of conventional 2D and 17 line km of NGRE19 2D reprocessing. PPL 2A33 contains two wells. Amabilo-1 drilled in water depth of 331 feet by Deminex between May 6 and June 6, 1974, to a total depth of 9,439 feet (MD) and was dry.

Ene-1 was successfully drilled by TotalEnergies (ex-Elf Petroleum) from October 9 to December 26, 1980, in 344 feet of water. The well penetrated a total of 236 feet of gas in five (5) sands. Ene-1 was subsequently plugged and abandoned. OML 136 is currently operated by Conoil.





## **NIGERIAN UPSTREAM PETROLEUM REGULATORY COMMISSION**

For all enquires please  
contact us at

**[AME-Nig-Br2025-  
Sales@tgs.com](mailto:AME-Nig-Br2025-Sales@tgs.com)**