



**NIGERIAN UPSTREAM
PETROLEUM REGULATORY
COMMISSION**

Nigeria 2025

Bid Round

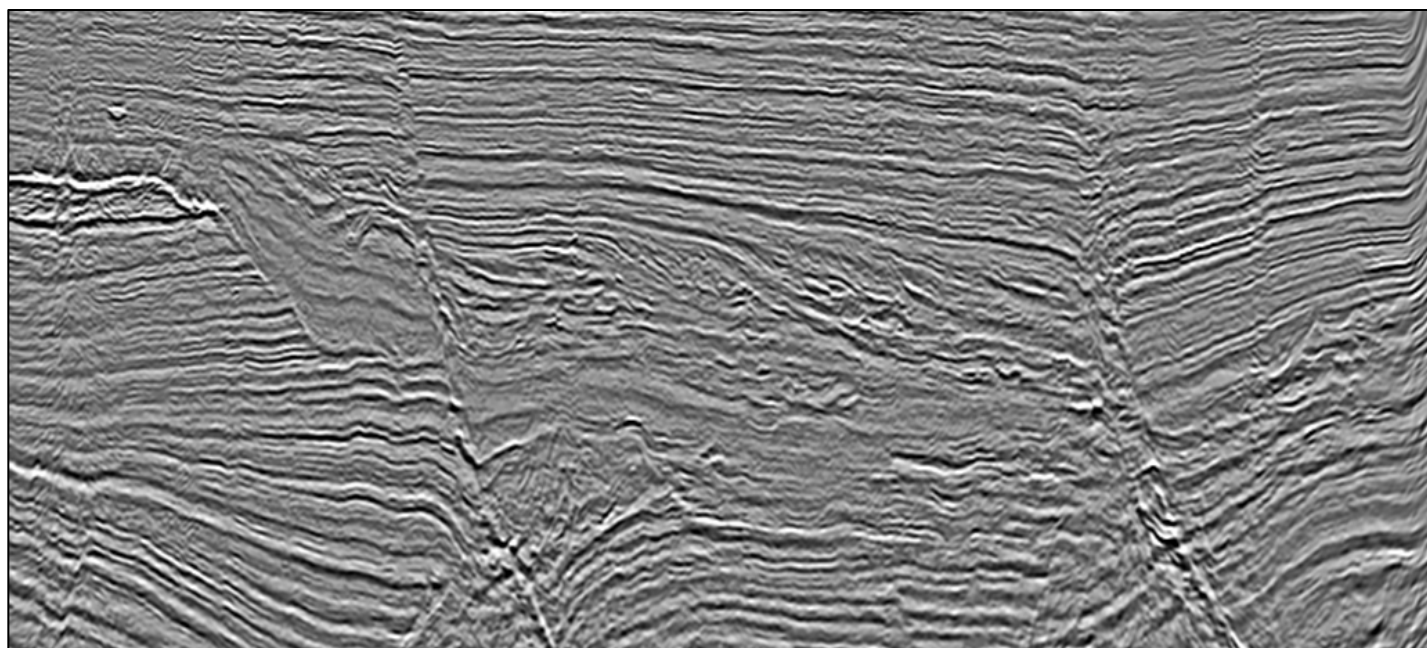
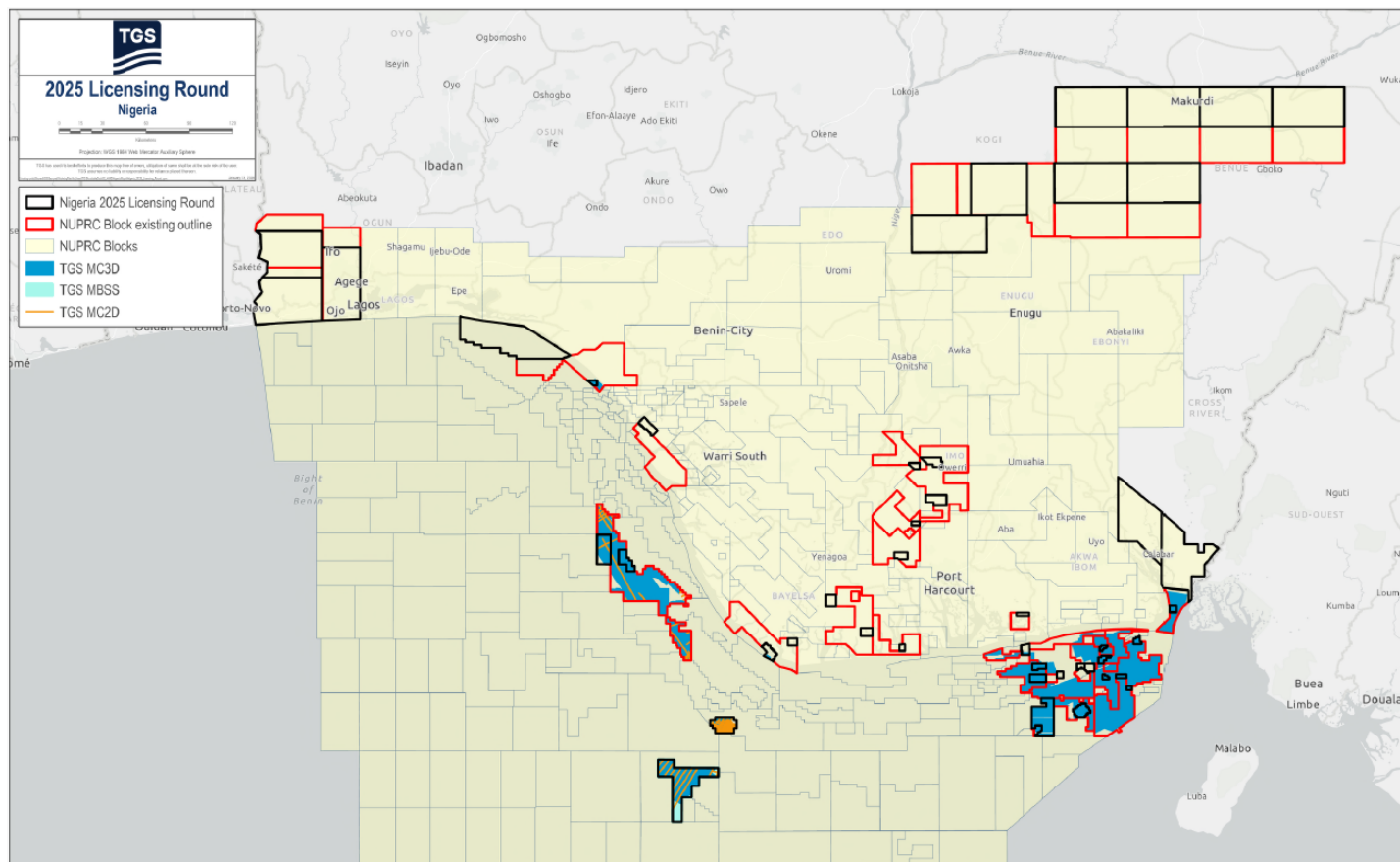
PPL – 2A34

Nigeria 2025 License Round Block Information Table



**NIGERIAN UPSTREAM
PETROLEUM REGULATORY
COMMISSION**

Block Name	Block sq. km	Data type	Data km 2D km/3D sq km	Wells	Water depth (m) min	Water Depth (m) max
PPL2A34	27	3D	460	1	23	23



MegaSurvey 3D example from the vicinity of PPL 2A34. Structural, stratigraphic and combination traps are present.

For all enquires please contact us at AME-Nig-Br2025-Sales@Tgs.com

Nigeria 2025 Bid Round

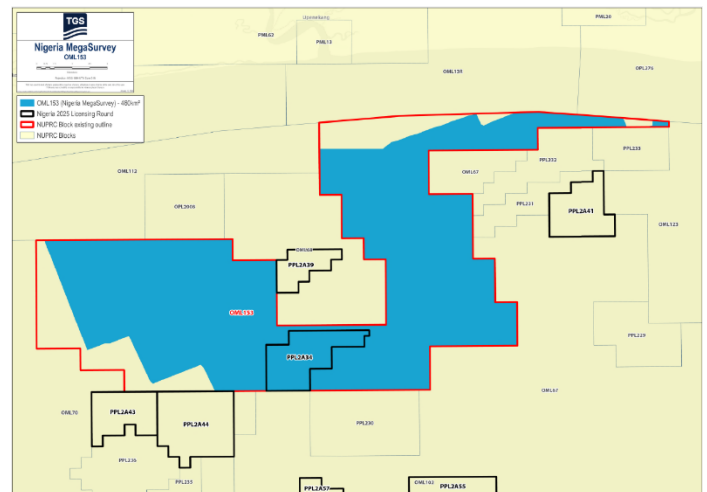
PPL – 2A34



**NIGERIAN UPSTREAM
PETROLEUM REGULATORY
COMMISSION**

PPL 2A34 covers an area excised from OML 153 in accordance with the Petroleum Industry Act (PIA) 2021. PPL 2A34 is situated in shallow offshore eastern Niger Delta sedimentary basin in 23m water depth. The entire OML 153 block is covered by 460 km² of MegaSurvey 3D. The closest processing facility is Idoho Platform (Mobil).

The Kenam field was discovered by Elf Petroleum (TotalEnergies) through the drilling of the Kenam-1 well between November 26, 1990 and January 4, 1991, to a total depth of 9,862.21 feet (MD). Kenam-1 encountered two hydrocarbon-bearing sands (Sands A and B), with a combined estimated hydrocarbon net pay of 17.5 feet. The well was subsequently suspended. OML 153 is currently operated by Conoil Producing.





NIGERIAN UPSTREAM PETROLEUM REGULATORY COMMISSION

For all enquires please
contact us at

[AME-Nig-Br2025-
Sales@tgs.com](mailto:AME-Nig-Br2025-Sales@tgs.com)