



**NIGERIAN UPSTREAM
PETROLEUM REGULATORY
COMMISSION**

Nigeria 2025

Bid Round

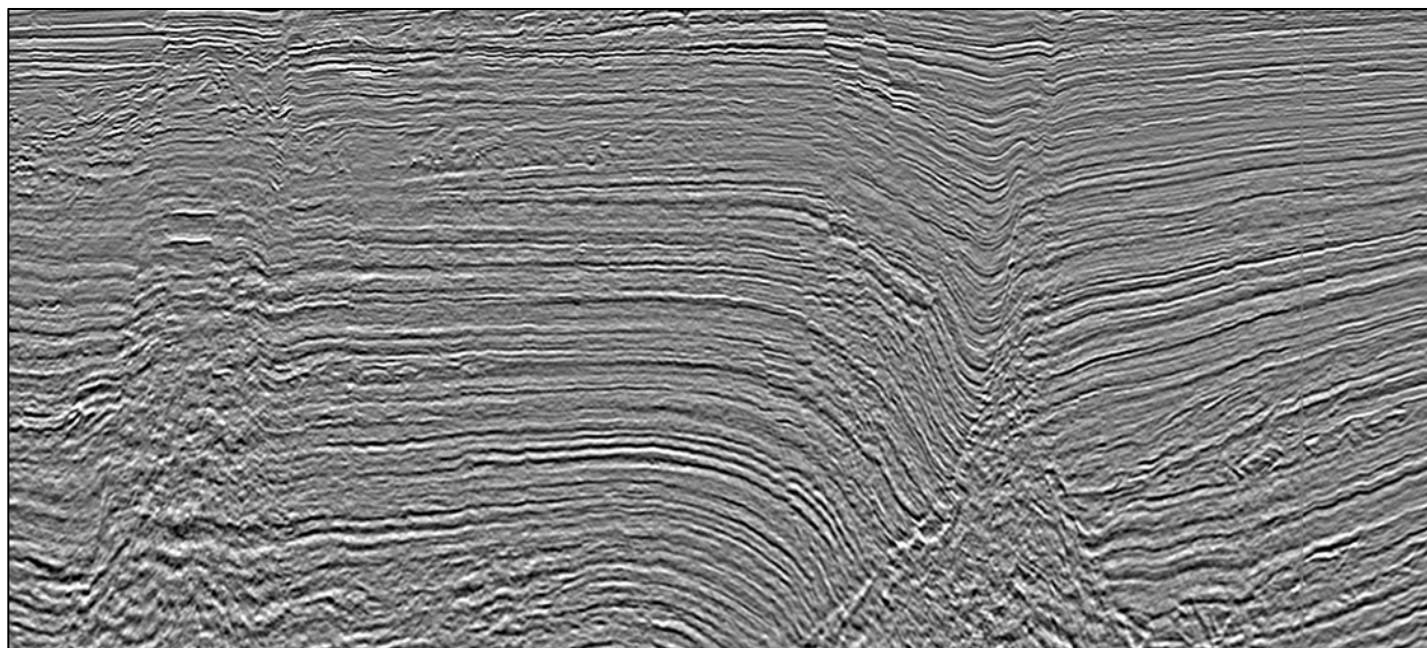
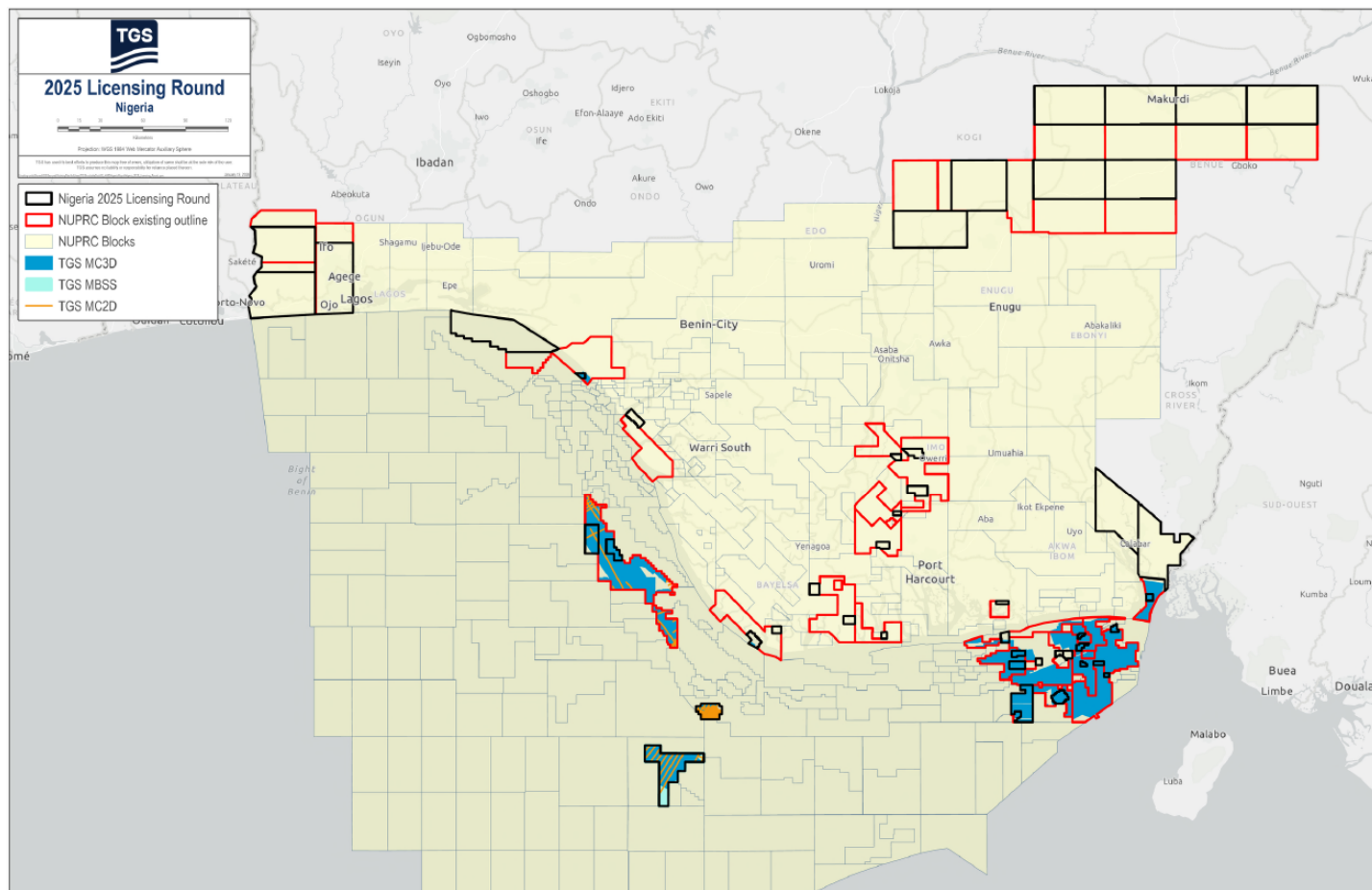
PPL – 2A35

Nigeria 2025 License Round Block Information Table



**NIGERIAN UPSTREAM
PETROLEUM REGULATORY
COMMISSION**

Block Name	Block sq. km	Data type	Data km 2D km/3D sq km	Wells	Water depth (m) min	Water Depth (m) max
PPL2A35	94	2D/3D	222/2896	1	85	85



MegaSurvey 3D example from OML 136 showing a large roll-over anticline with extensional faulting.

For all enquires please contact us at AME-Nig-Br2025-Sales@Tgs.com

Nigeria 2025 Bid Round

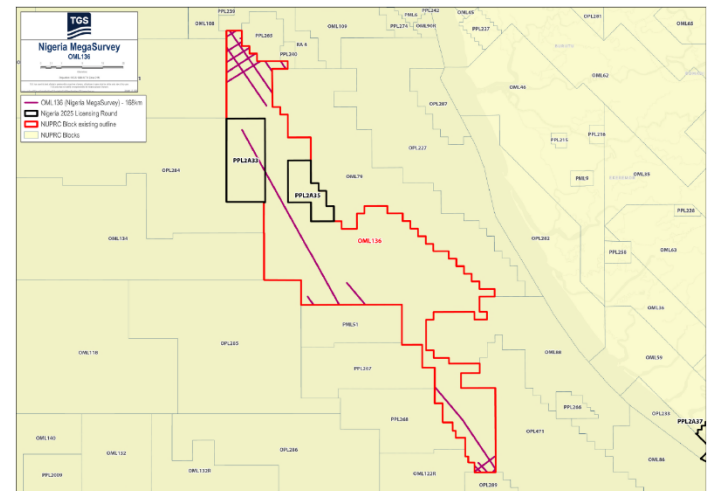
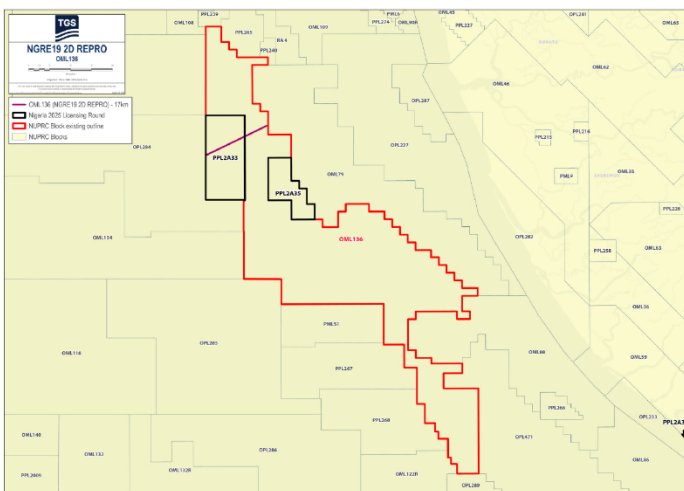
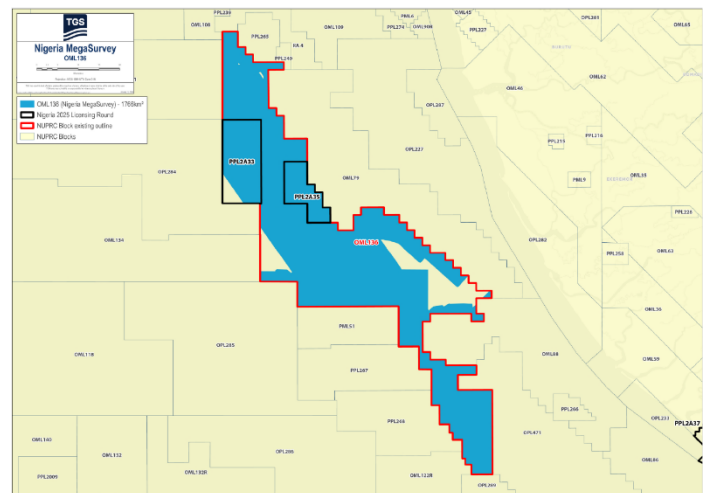
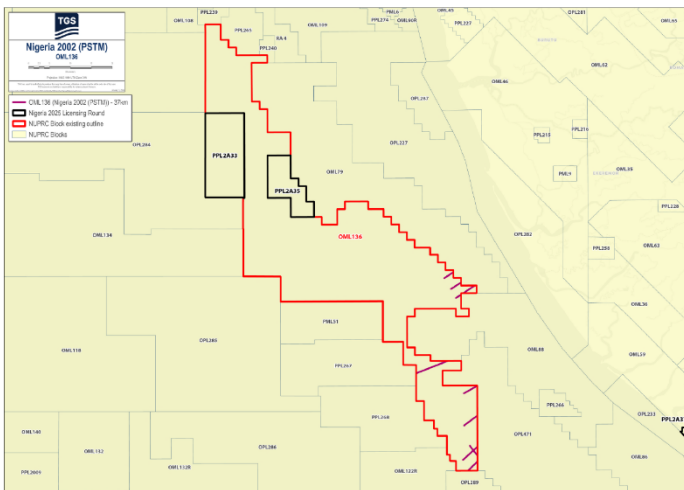
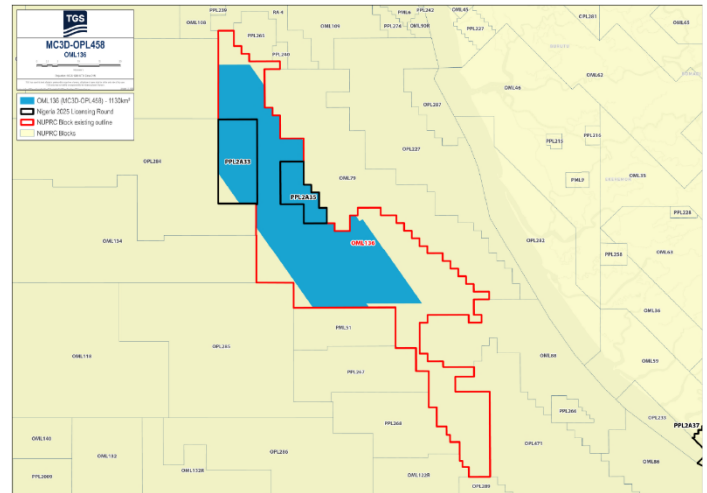
PPL – 2A35



**NIGERIAN UPSTREAM
PETROLEUM REGULATORY
COMMISSION**

PPL 2A35 covers an area excised from OML 136 in accordance with the Petroleum Industry Act (PIA) 2021. PPL 2A35 is situated shallow offshore western Niger Delta sedimentary basin. The block is about 55km west of the mouth of Forcados River.

Data coverage over the entire OML 136 block includes: 1766 km² of MegaSurvey 3D coverage, 1130 km² of conventional 3D, 168 line km of MegaSurvey 2D, 37 line km of conventional 2D and 17 line km of NGRE19 2D reprocessing. The Misty-1 well was drilled in water depth of 85m by Conoil between July 10 and November 1, 2000, to a total depth of 16,506 feet (MD). The well was drilled off structure and subsequently plugged and abandoned. OML 136 is currently operated by Conoil.





NIGERIAN UPSTREAM PETROLEUM REGULATORY COMMISSION

For all enquires please
contact us at

**[AME-Nig-Br2025-
Sales@tgs.com](mailto:AME-Nig-Br2025-Sales@tgs.com)**