



**NIGERIAN UPSTREAM
PETROLEUM REGULATORY
COMMISSION**

Nigeria 2025

Bid Round

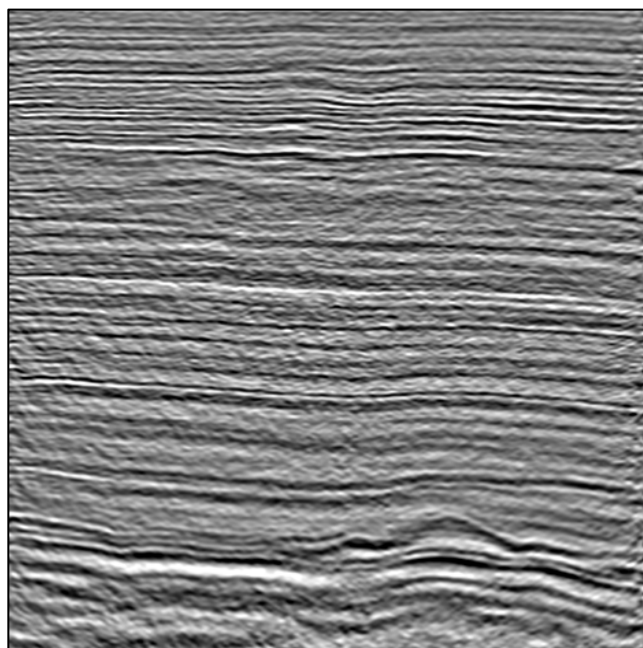
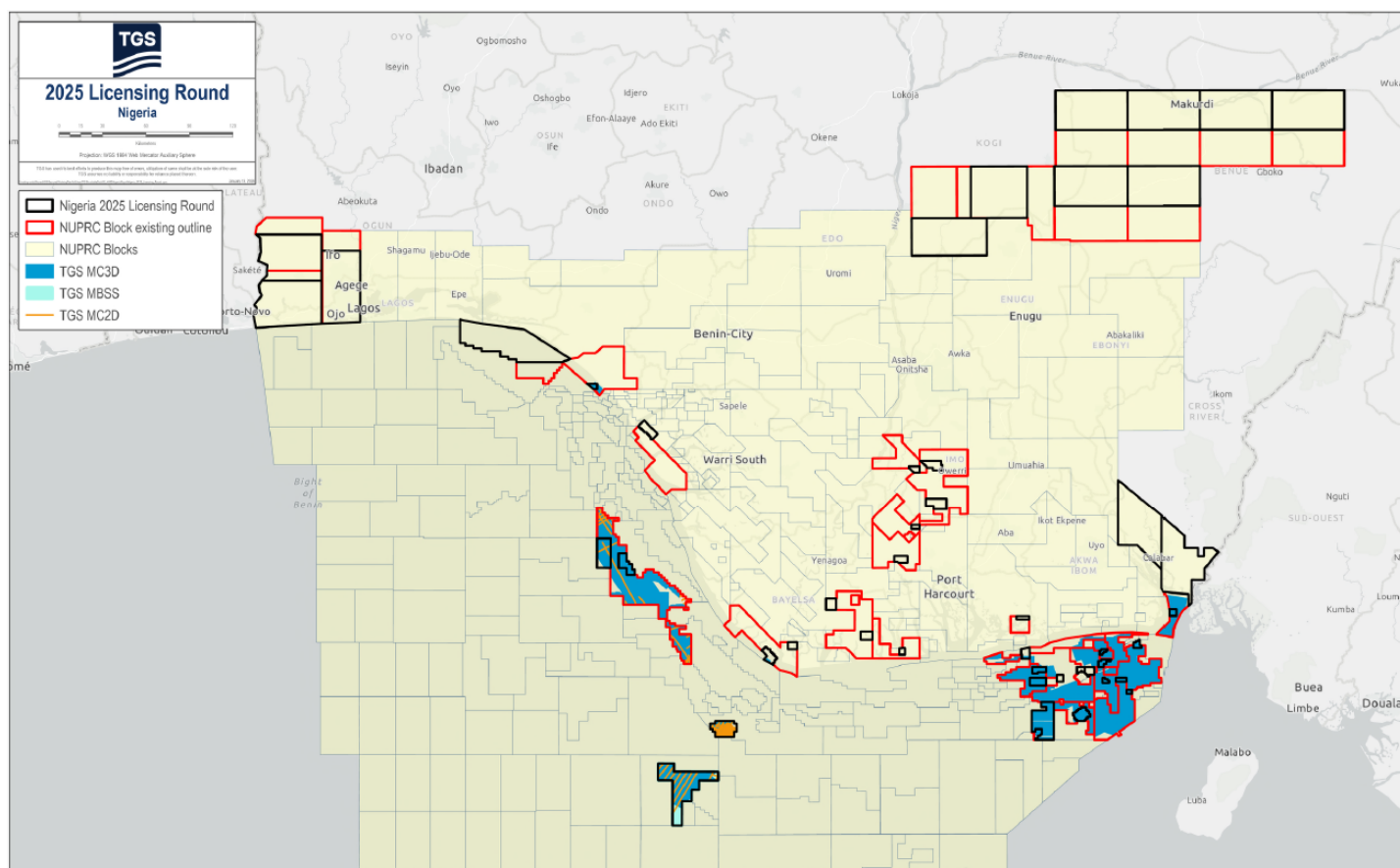
PPL – 2A36

Nigeria 2025 License Round Block Information Table



**NIGERIAN UPSTREAM
PETROLEUM REGULATORY
COMMISSION**

Block Name	Block sq. km	Data type	Data km 2D km/3D sq km	Wells	Water depth (m) min	Water Depth (m) max
PPL2A36	17	2D/3D	1/41	1	7	7



MegaSurvey 3D example from the vicinity of PPL 2A36

For all enquires please contact us at AME-Nig-Br2025-Sales@Tgs.com

Nigeria 2025 Bid Round

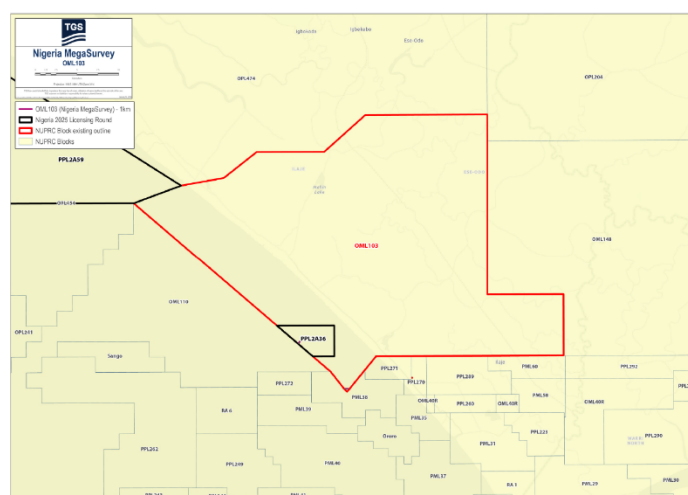
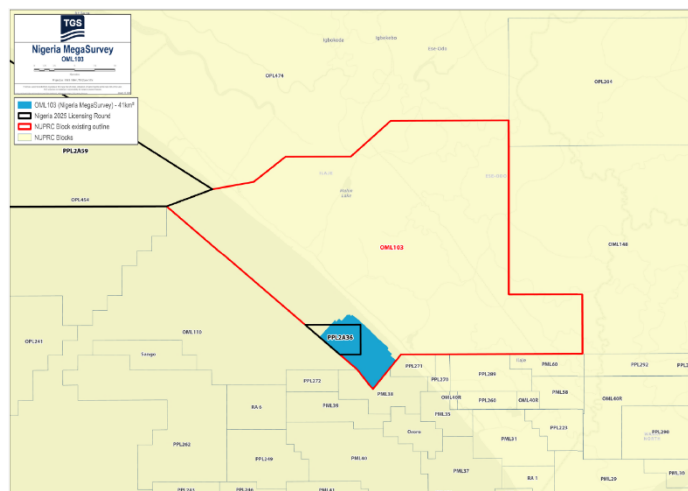
PPL – 2A36



**NIGERIAN UPSTREAM
PETROLEUM REGULATORY
COMMISSION**

PPL 2A36 covers an area excised from OML 103 in accordance with the Petroleum Industry Act (PIA) 2021. PPL 2A36 is situated in a shallow water western offshore Niger Delta in water depth of 7m. The entire OML 103 block is covered by 41 km² of MegaSurvey 3D and 1 line km of MegaSurvey 2D.

The Olori field is located offshore on the continental shelf in water depth of 7m western Niger-Delta sedimentary basin. The closest flowstations Bella field (Conoil) Olori field was discovered by Conoil through the drilling of the Olori-1 between May 20 and August 1, 2001, to a total depth of 8,225 feet (MD). Olori1 encountered six heavy oil-bearing sands with a combined hydrocarbon gross pay thickness of 103 feet. The well was subsequently plugged and abandoned. OML 103 is currently operated by Conoil.





NIGERIAN UPSTREAM PETROLEUM REGULATORY COMMISSION

For all enquires please
contact us at

**[AME-Nig-Br2025-
Sales@tgs.com](mailto:AME-Nig-Br2025-Sales@tgs.com)**