



**NIGERIAN UPSTREAM  
PETROLEUM REGULATORY  
COMMISSION**

# **Nigeria 2025**

## **Bid Round**

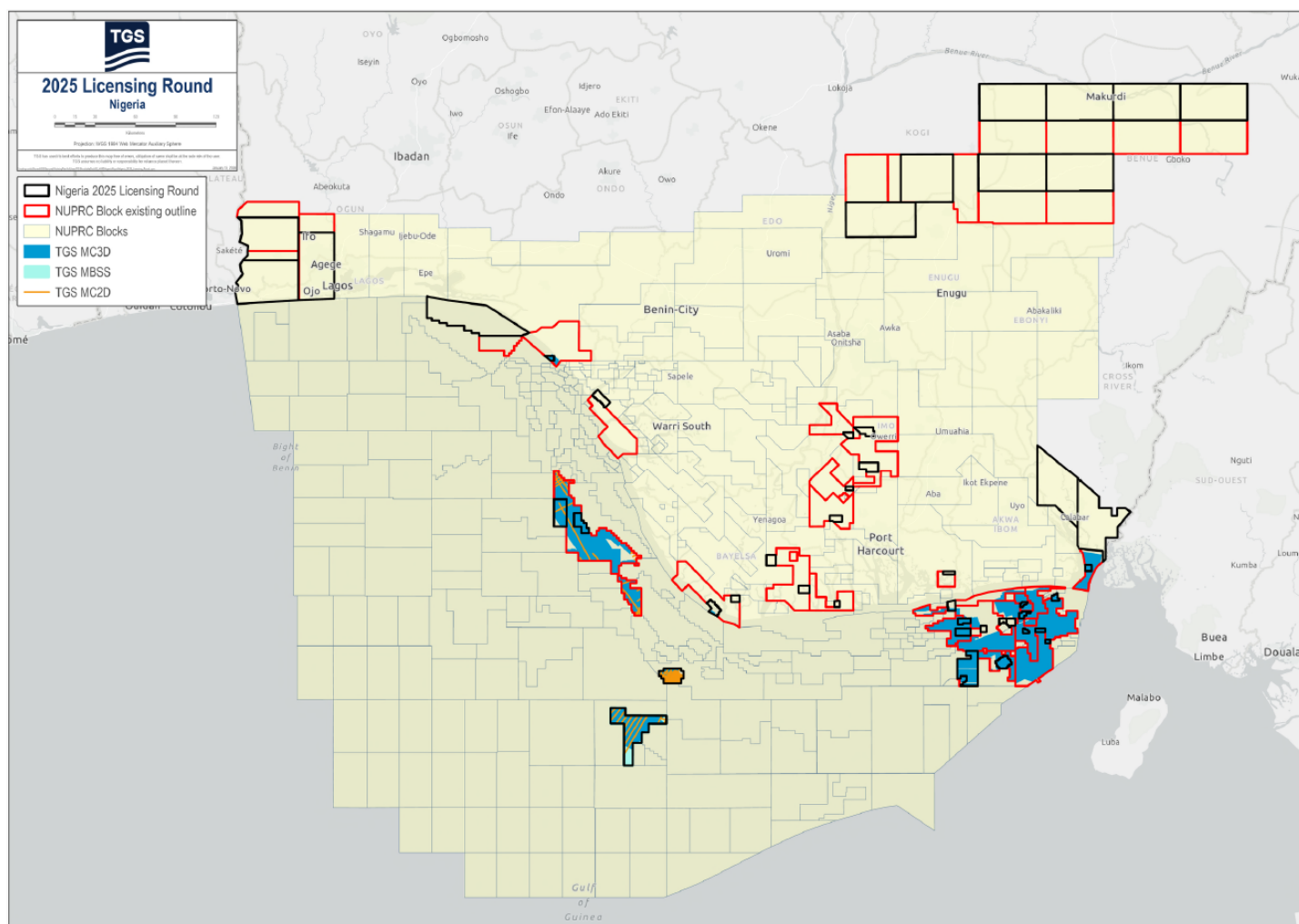
**PPL – 2A37**

# Nigeria 2025 License Round Block Information Table



**NIGERIAN UPSTREAM  
PETROLEUM REGULATORY  
COMMISSION**

Block Name	Block sq. km	Data type	Data km 2D km/3D sq km	Wells	Water depth (m) min	Water Depth (m) max
PPL2A37	62	2D/3D	3/12	2	8	8



# Nigeria 2025 Bid Round

## PPL – 2A37

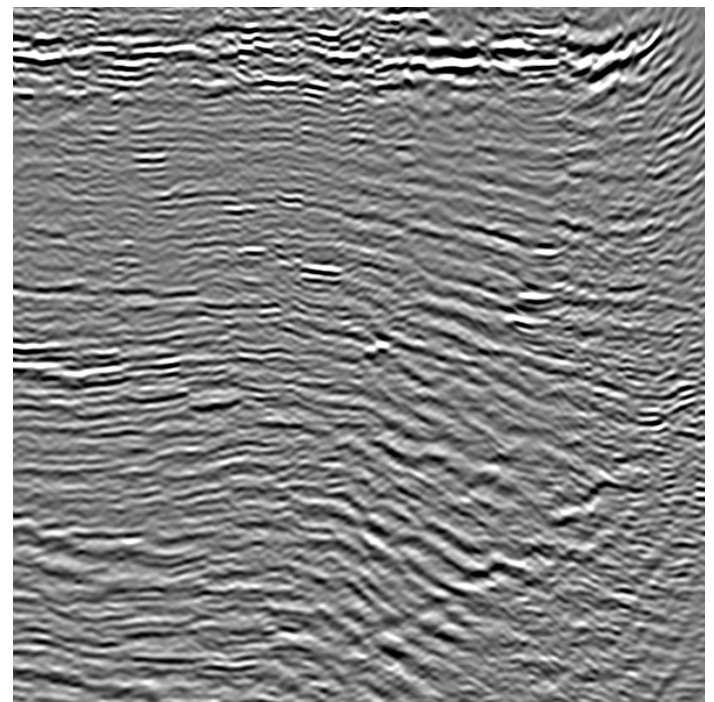
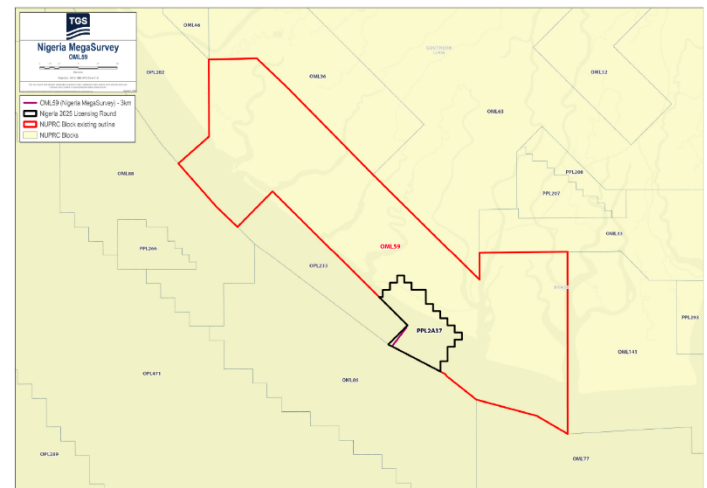
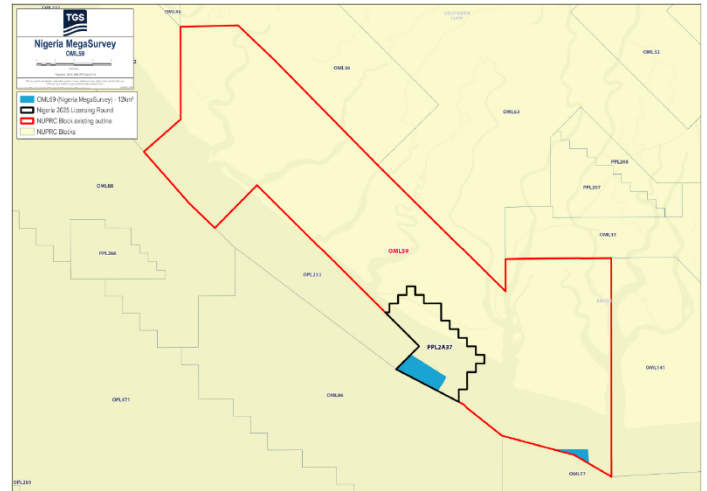


**NIGERIAN UPSTREAM  
PETROLEUM REGULATORY  
COMMISSION**

PPL 2A37 covers an area excised from OML 59 in accordance with the Petroleum Industry Act (PIA) 2021. PPL 2A37 is situated in shallow offshore western Niger Delta sedimentary basin in 8m of water depth. The entire OML 59 includes 12 km<sup>2</sup> of MegaSurvey 3D and 3 line km of MegaSurvey 2D. There are two wells – Foniweitoro-1 and Foniweitoro South-1. OML 59 is currently operated by Conoil.

The Foniweitoro South-1 well was drilled by TotalEnergies (ex-Elf Petroleum) from April 9 to 28, 1978 to a total depth of 9,503 feet MD followed by Foniweitoro-1 from May 11 to June 1, 1978, to a total depth of 10,023 feet MD. Both well were drilled off structure but the mapping of the PPL shows good prospects supported by strong attributes on structure that can be tested with new wells. The wells were subsequently plugged and abandoned. The closest facility to PPL 2A37 is the Otuo Platform (Conoil).

Seismic example from PPL 2A37 showing a roll-over anticline structure with extensional faulting.





## **NIGERIAN UPSTREAM PETROLEUM REGULATORY COMMISSION**

For all enquires please  
contact us at

**[AME-Nig-Br2025-  
Sales@tgs.com](mailto:AME-Nig-Br2025-Sales@tgs.com)**