



**NIGERIAN UPSTREAM
PETROLEUM REGULATORY
COMMISSION**

Nigeria 2025

Bid Round

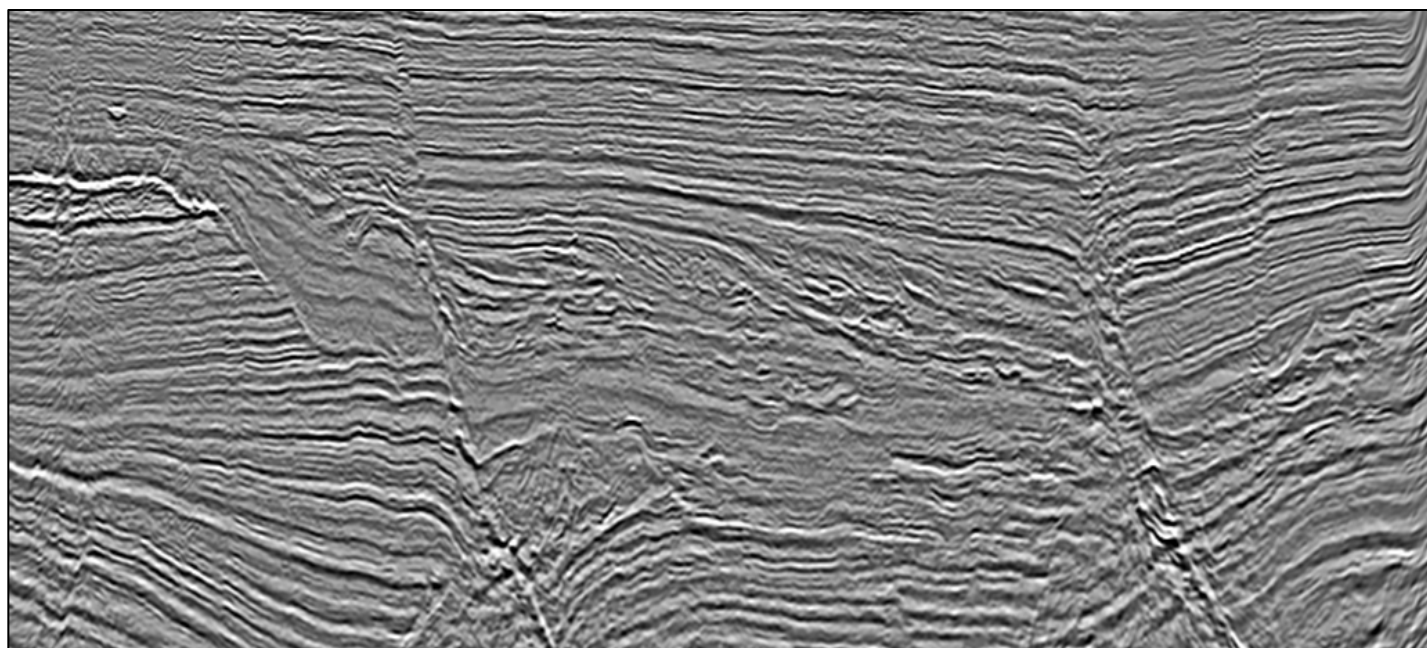
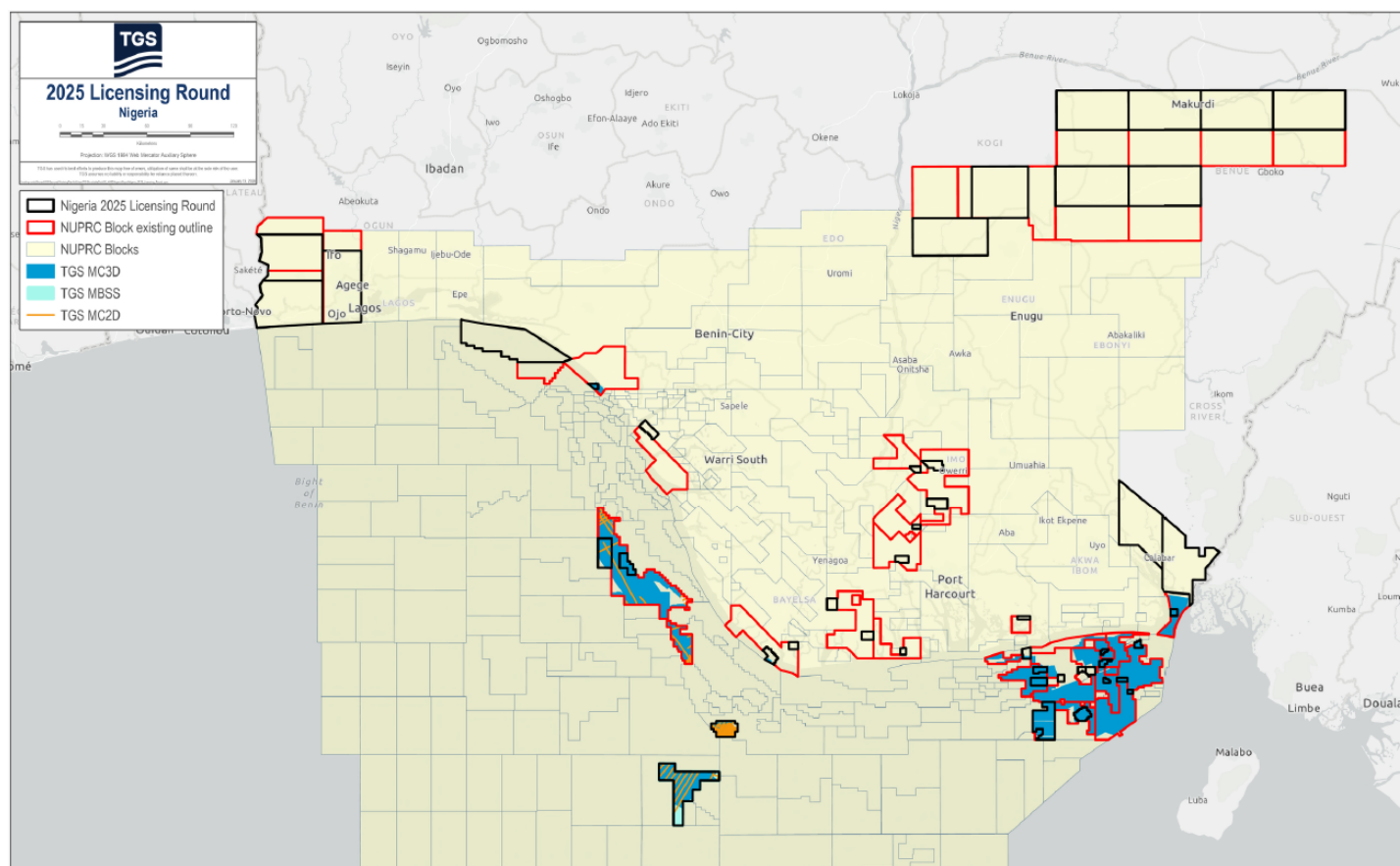
PPL – 2A39

Nigeria 2025 License Round Block Information Table



**NIGERIAN UPSTREAM
PETROLEUM REGULATORY
COMMISSION**

Block Name	Block sq. km	Data type	Data km 2D km/3D sq km	Wells	Water depth (m) min	Water Depth (m) max
PPL2A39	13	23D	123	2	20	20



MegaSurvey 3D example from the vicinity of PPL 2A39. Structural, stratigraphic and combination traps are present.

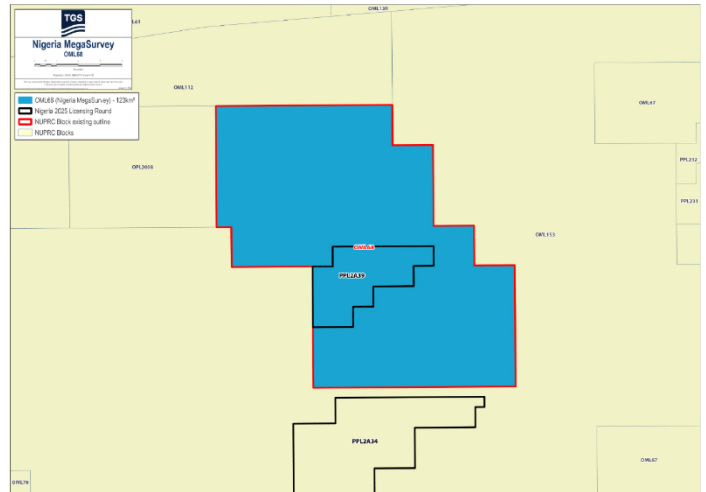
For all enquires please contact us at AME-Nig-Br2025-Sales@Tgs.com

Nigeria 2025 Bid Round
PPL – 2A39



PPL 2A39 covers an area excised from OML 68 in accordance with the Petroleum Industry Act (PIA) 2021. PPL 2A39 is situated in eastern offshore Niger Delta in 20m water depth. The closest processing facility is Energy). Idoho Platform (Seplat Energy)

The entire OML 68 block is covered by 123 km² of MegaSurvey 3D. The Ebet-1 well was drilled by ExxonMobil between January 25 and February 25 2013, to a total depth of 7,651 feet (MD). The well penetrated a total of 423 feet of oil in four (4) sands. The well was subsequently suspended. PPL 2A39 also includes well Idoho North-1.





NIGERIAN UPSTREAM PETROLEUM REGULATORY COMMISSION

For all enquires please
contact us at

**[AME-Nig-Br2025-
Sales@tgs.com](mailto:AME-Nig-Br2025-Sales@tgs.com)**