



**NIGERIAN UPSTREAM
PETROLEUM REGULATORY
COMMISSION**

Nigeria 2025

Bid Round

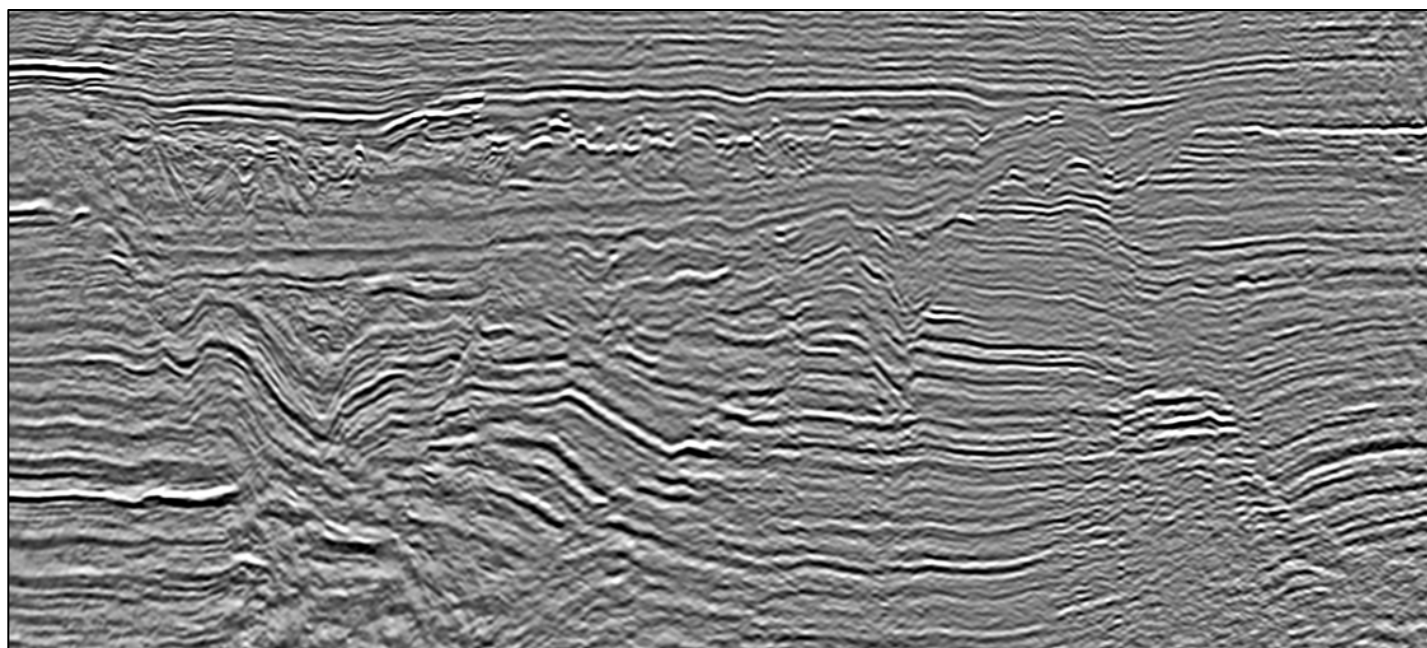
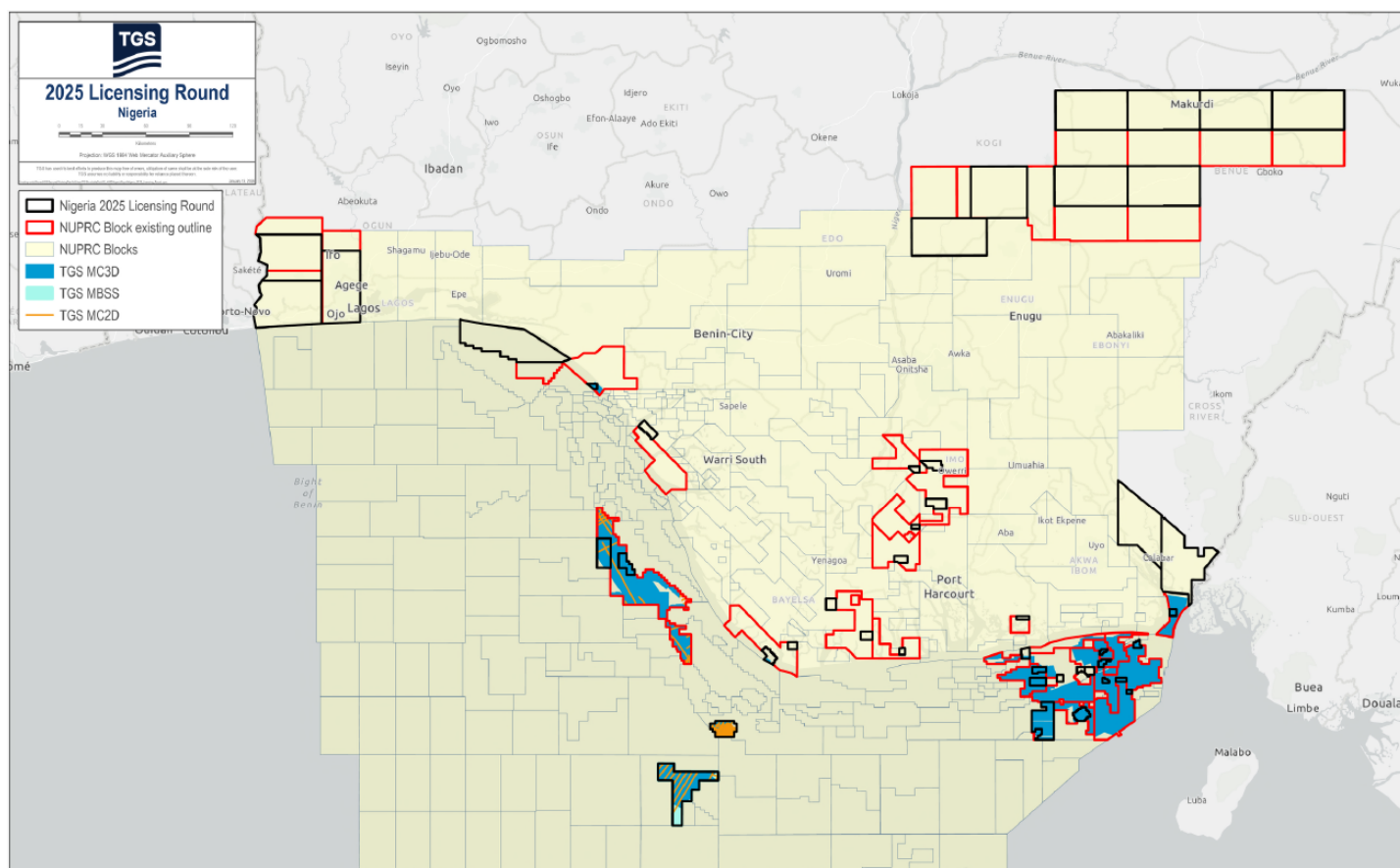
PPL – 2A41

Nigeria 2025 License Round Block Information Table



**NIGERIAN UPSTREAM
PETROLEUM REGULATORY
COMMISSION**

Block Name	Block sq. km	Data type	Data km 2D km/3D sq km	Wells	Water depth (m) min	Water Depth (m) max
PPL2A41	22	3D	910	2	15	15



MegaSurvey 3D in the vicinity of PPL 2A41. A range of structural, stratigraphic and combination traps are present.

For all enquires please contact us at AME-Nig-Br2025-Sales@Tgs.com

Nigeria 2025 Bid Round

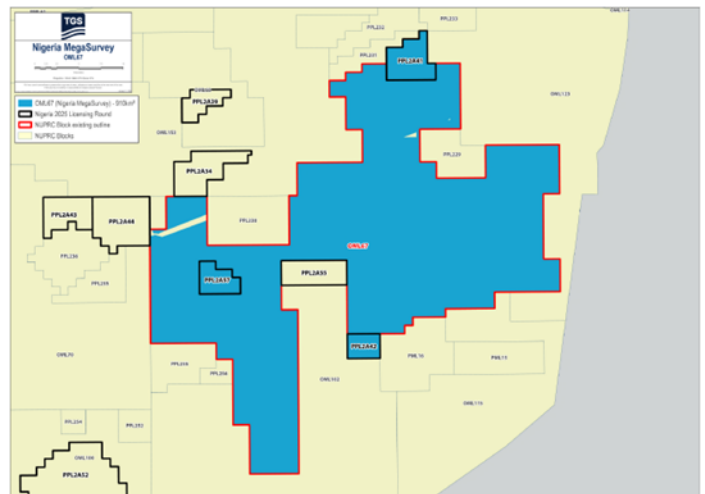
PPL – 2A41



**NIGERIAN UPSTREAM
PETROLEUM REGULATORY
COMMISSION**

PPL 2A41 covers an area excised from OML 67 in accordance with the Petroleum Industry Act (PIA) 2021. PPL 2A41 is situated shallow offshore eastern Niger Delta sedimentary basin. The closest processing facility is Itut Platform (Seplat Energy).

The entire OML 67 block includes 910 km² of MegaSurvey 3D. The Idiok-1 well was drilled in water depth of 15m between March 4 and April 1, 1965, to a total depth of 9,383 feet (MD). The well penetrated a total of 32 feet of hydrocarbon in two (2) sands. Idiok-1 was subsequently suspended. Other surrounding fields are Ufeni, Ekpai, Itut and Amaniba. OML 67 is currently operated by Seplat Energy. PPL 2A41 also includes the Itut North-2 well.





NIGERIAN UPSTREAM PETROLEUM REGULATORY COMMISSION

For all enquires please
contact us at

**[AME-Nig-Br2025-
Sales@tgs.com](mailto:AME-Nig-Br2025-Sales@tgs.com)**