



**NIGERIAN UPSTREAM
PETROLEUM REGULATORY
COMMISSION**

Nigeria 2025

Bid Round

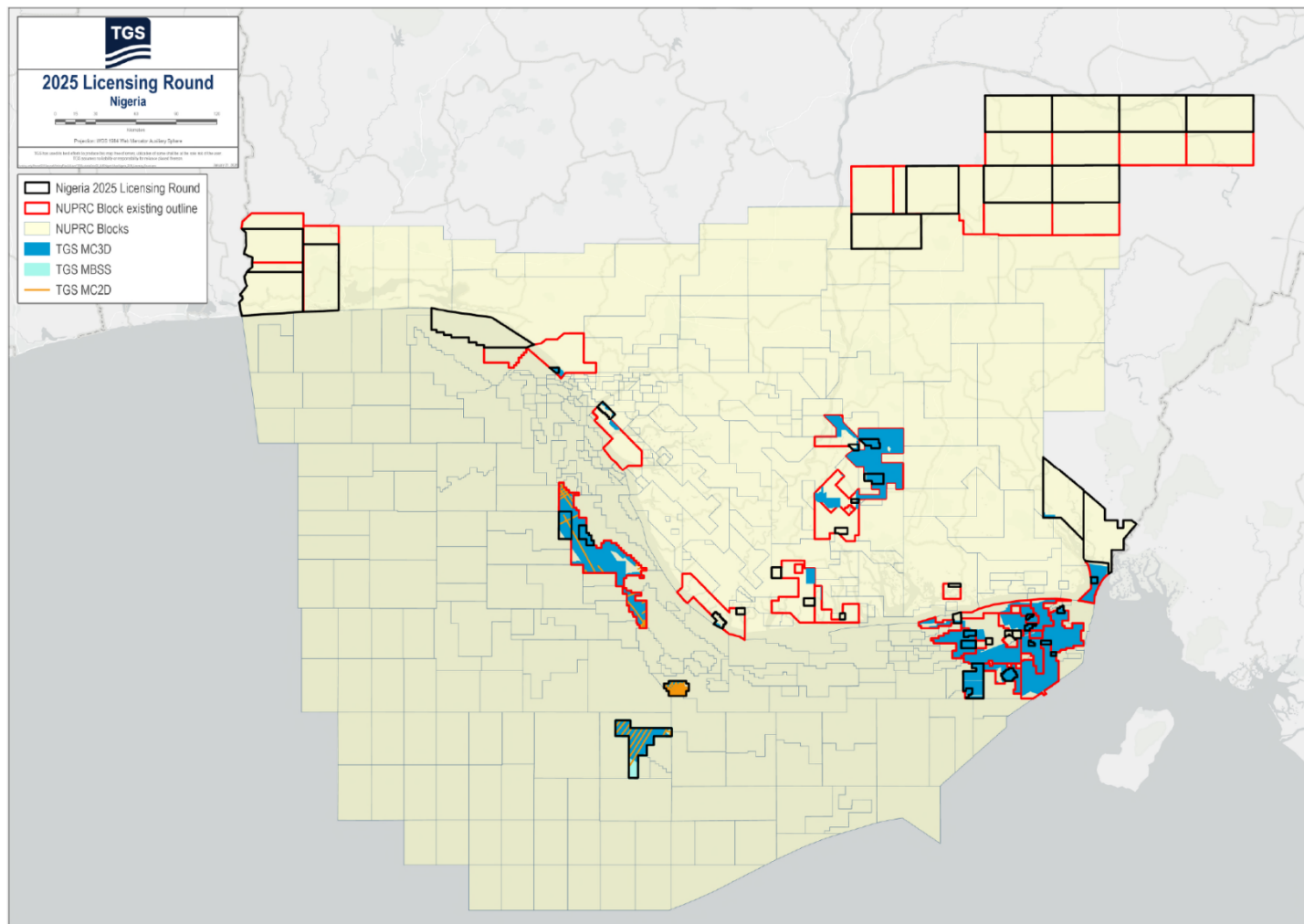
PPL – 2A49

Nigeria 2025 License Round Block Information Table



**NIGERIAN UPSTREAM
PETROLEUM REGULATORY
COMMISSION**

Block Name	Block sq. km	Data type	Data km 2D km/3D sq km	Wells
PPL2A49	69	3D	46	1



Nigeria 2025 Bid Round

PPL – 2A49



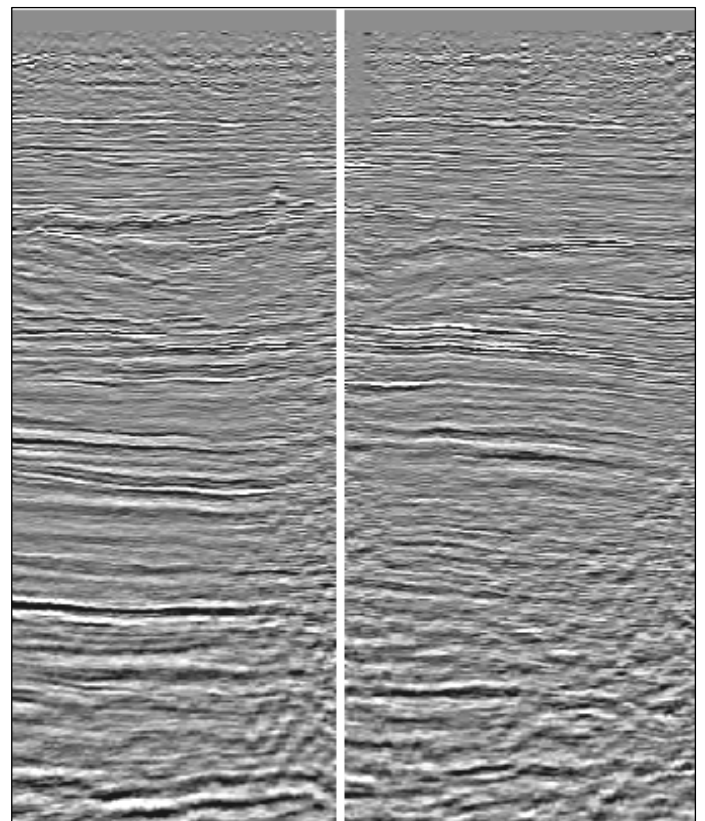
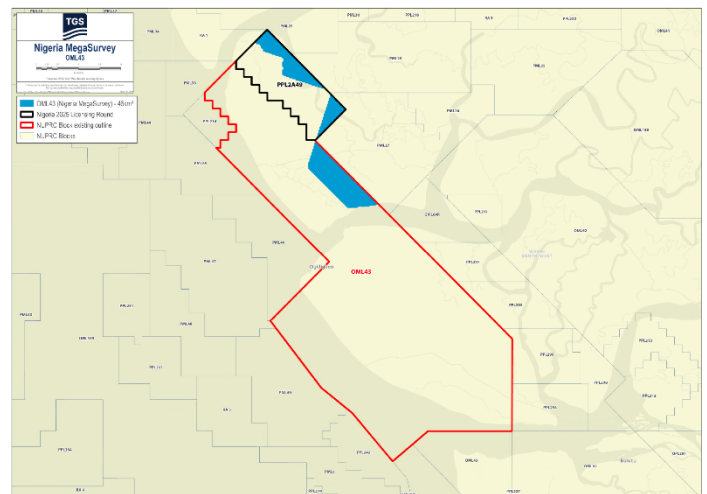
**NIGERIAN UPSTREAM
PETROLEUM REGULATORY
COMMISSION**

PPL 2A49 covers an area excised from OML 43 in accordance with the Petroleum Industry Act (PIA) 2021. PPL 2A49 is situated in a swamp terrain, onshore Niger Delta close to the mouth of Benin River. The block is covered by 46 km² of MegaSurvey 3D.

The Bobi field is located in the Central Swamp Depobelt, swamp terrain of western Niger Delta sedimentary basin. The closest flowstations are those of Dibi field (Chevron) and Otumara field (Renaissance Africa). Bobi field was discovered by SPDC through the drilling of the Bobi-1 between August 21 and September 6, 1972, to a total depth of 8,000 feet (MD).

Bobi-1 encountered two hydrocarbon-bearing sands with a combined estimated hydrocarbon net pay of 33.5 feet. The well was plugged and abandoned. OML 43 is currently operated by Renaissance Energy Africa.

MegaSurvey 3D example from the vicinity of PPL 2A49.





NIGERIAN UPSTREAM PETROLEUM REGULATORY COMMISSION

For all enquires please
contact us at

**[AME-Nig-Ir2025-
Sales@tgs.com](mailto:AME-Nig-Ir2025-Sales@tgs.com)**