



**NIGERIAN UPSTREAM
PETROLEUM REGULATORY
COMMISSION**

Nigeria 2025

Bid Round

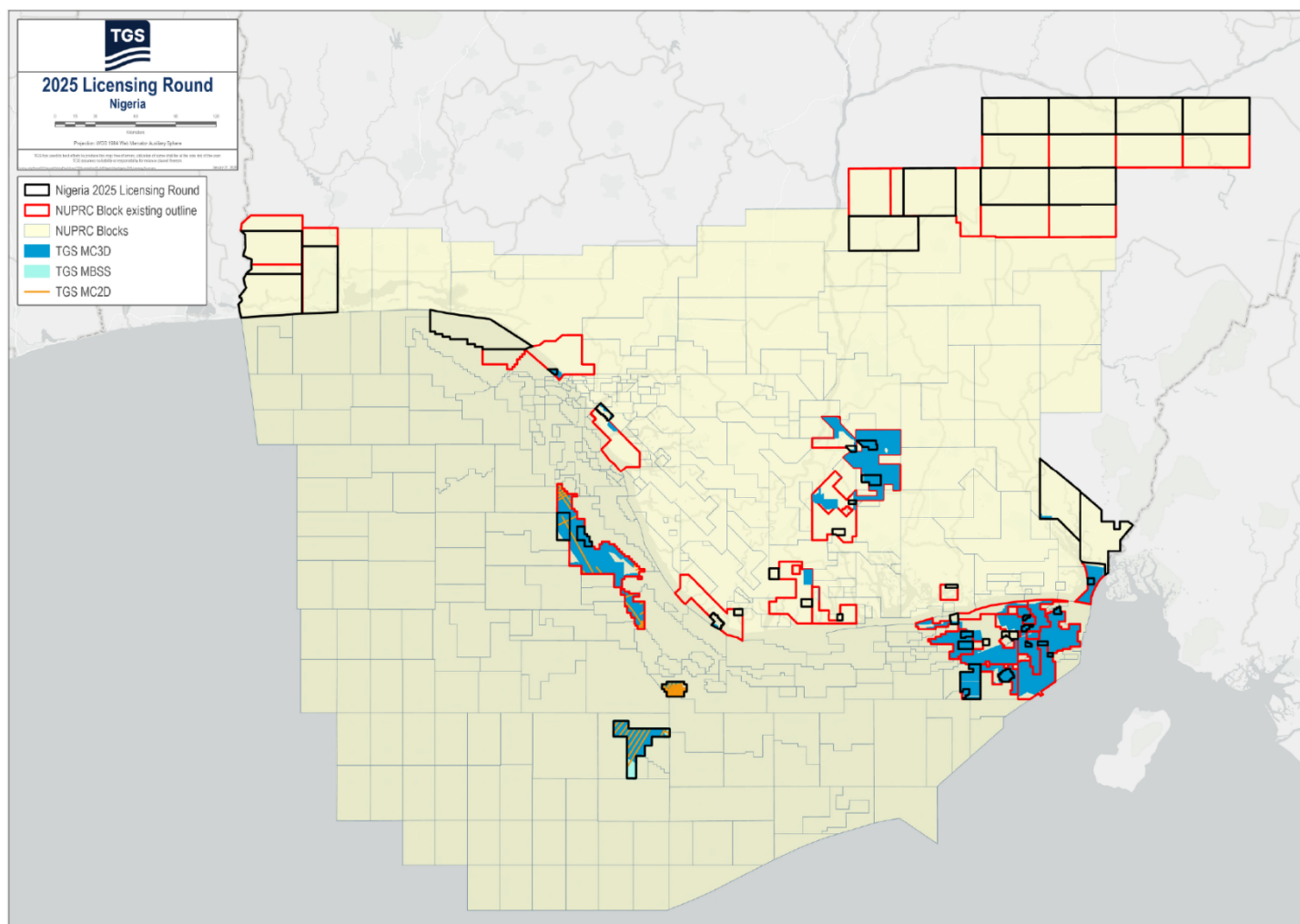
PPL – 2A51

Nigeria 2025 License Round Block Information Table



**NIGERIAN UPSTREAM
PETROLEUM REGULATORY
COMMISSION**

Block Name	Block sq. km	Data type	Data km 2D km/3D sq km	Wells
PPL2A51	26	3D	159	1



Nigeria 2025 Bid Round

PPL – 2A51

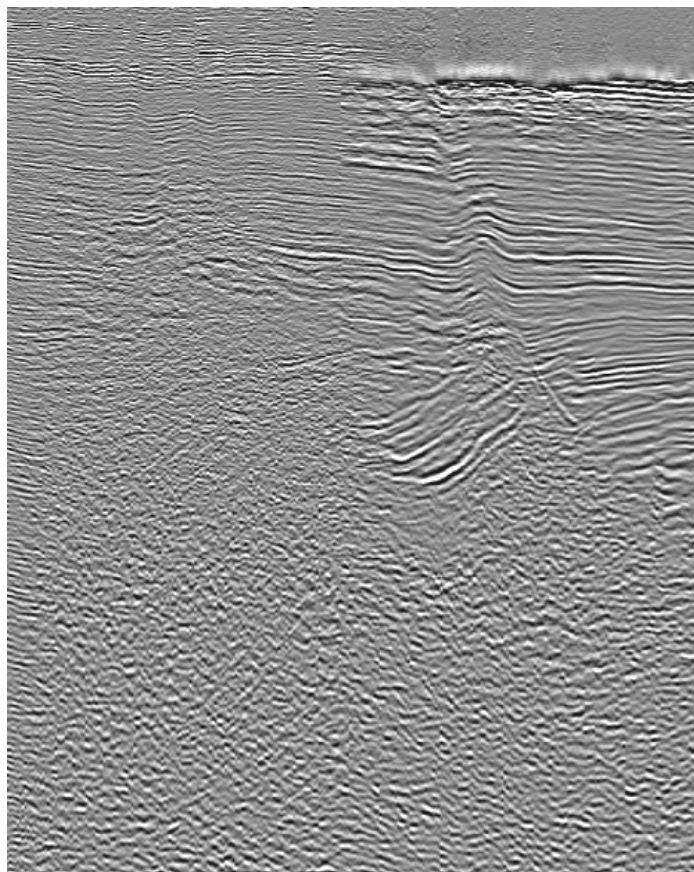
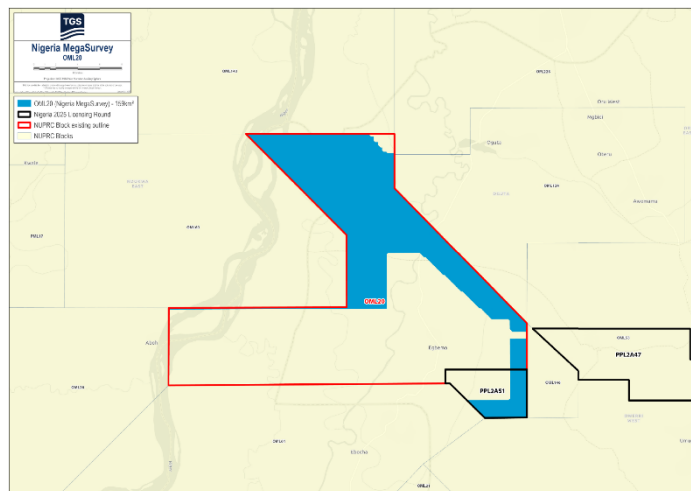


**NIGERIAN UPSTREAM
PETROLEUM REGULATORY
COMMISSION**

PPL 2A51 covers an area excised from OML 20 in accordance with the Petroleum Industry Act (PIA) 2021. PPL 2A51 is situated in an onshore land terrain Eastern Niger Delta. The block is covered by 159 km² of MegaSurvey 3D. The Oforola field is located in the Greater Ughelli Depobelt of the Niger-Delta sedimentary basin. The closest flowstations are those of Agu field (Sterling) and Egbema field (Renaissance Africa).

Oforola-1 was drilled by SPDC between April 9 and May 11, 1972, to a total depth of 7,907 feet (MD). The well penetrated a total of 291 feet gross pay thickness of oil in seven (7) sands. The well is subsequently plugged and abandoned. OML 20 is currently operated by Renaissance.

MegaSurvey 3D example from the vicinity of PPL 2A51





NIGERIAN UPSTREAM PETROLEUM REGULATORY COMMISSION

For all enquires please
contact us at

**[AME-Nig-Ir2025-
Sales@tgs.com](mailto:AME-Nig-Ir2025-Sales@tgs.com)**