



**NIGERIAN UPSTREAM
PETROLEUM REGULATORY
COMMISSION**

Nigeria 2025

Bid Round

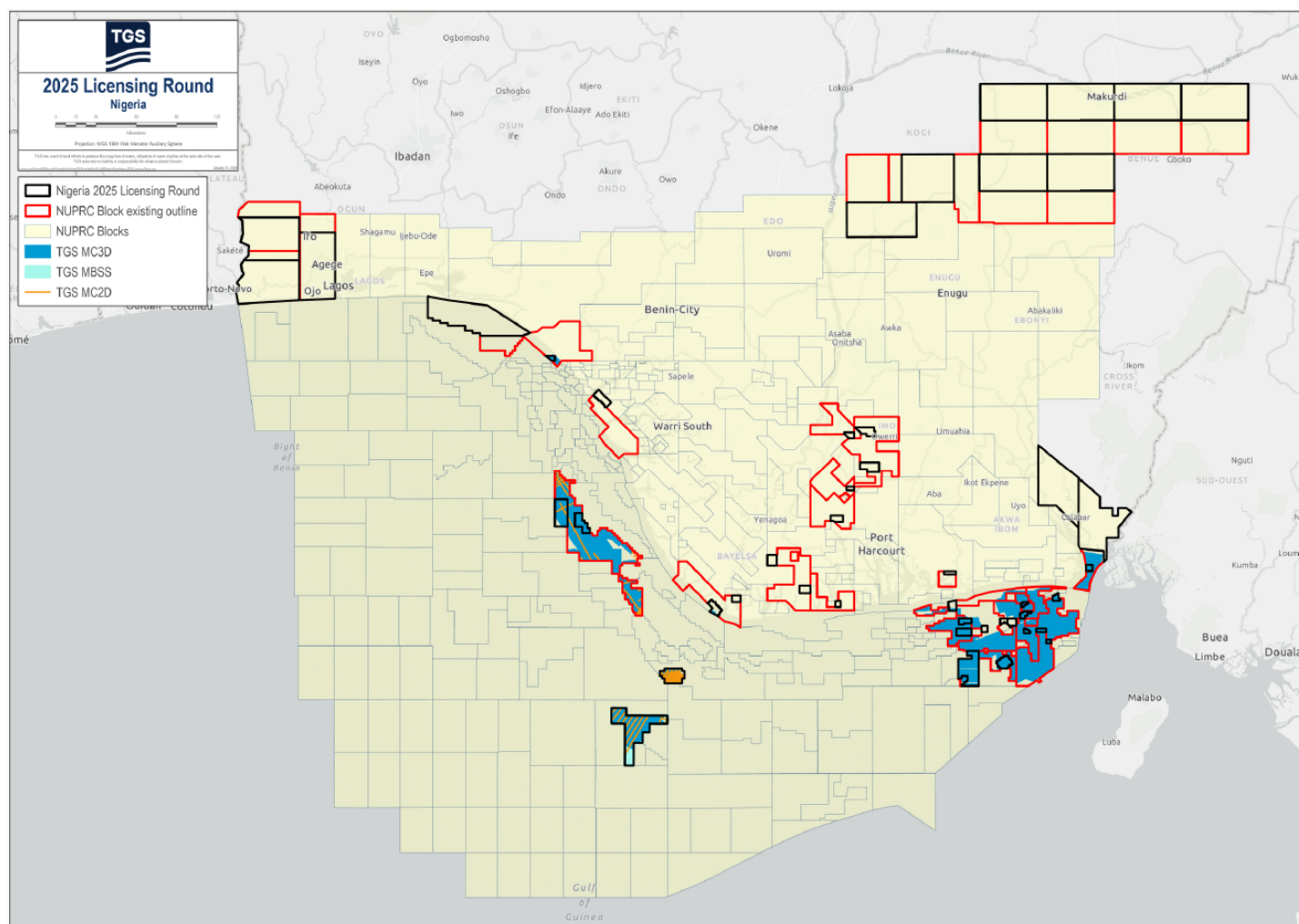
PPL – 2A52

Nigeria 2025 License Round Block Information Table



**NIGERIAN UPSTREAM
PETROLEUM REGULATORY
COMMISSION**

Block Name	Block sq. km	Data type	Data km 2D km/3D sq km	Wells	Water depth (m) min	Water Depth (m) max
PPL2A52	76	3D	278	3	67	67



Nigeria 2025 Bid Round

PPL – 2A52



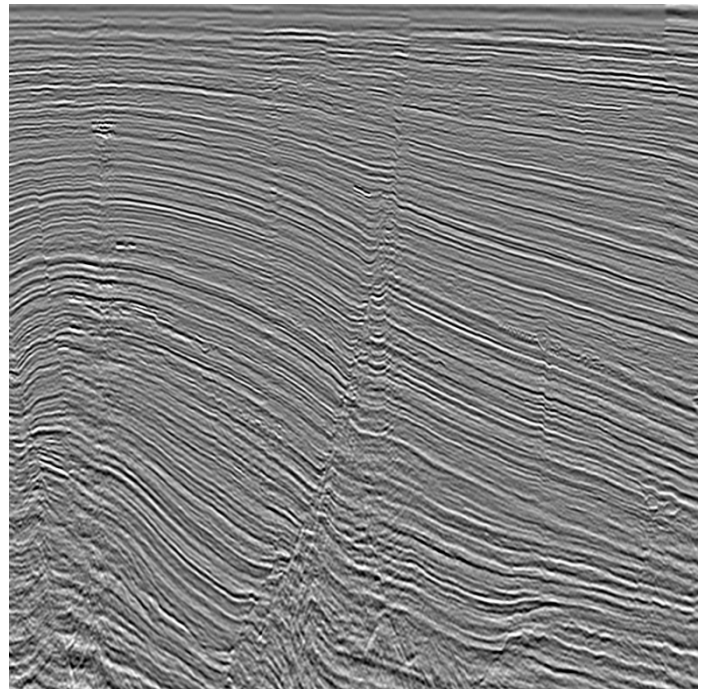
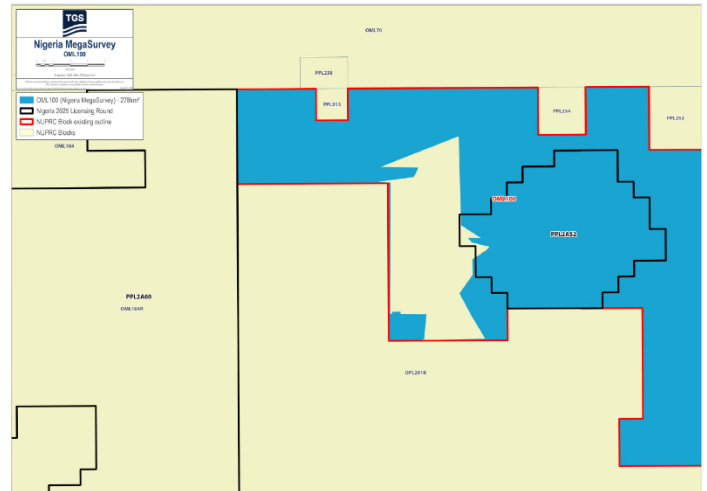
**NIGERIAN UPSTREAM
PETROLEUM REGULATORY
COMMISSION**

PPL 2A52 covers an area excised from OML 100 in accordance with the Petroleum Industry Act (PIA) 2021. PPL 2A52 is situated in the eastern offshore Niger Delta in 67m water depth. OML 100 is currently operated by TotalEnergies. The entire OML 100 block is covered by 278 km² of MegaSurvey 3D.

The Ayama field is located in the Shallow Offshore Depobelt of the eastern Niger Delta sedimentary basin, sandwiched between the discoveries of Odudu producing field and Nkotan to the west and east, respectively. The nearest processing facility is Odudu FPSO.

The Ayama-1 exploration well was drilled by TotalEnergies between August 16 and September 10, 1992, to a total depth of 6,004 feet (MD). The well drilled off-structure was subsequently sidetracked to a TD of 8,088 feet. In 2018, Ayama-3 was drilled some 8.5km northeast of Ayama-1/1ST to a TD of 6,621 feet. The well was suspended. Another well, LGG1, was drilled from September 19 to October 20, 1967, to a TD of 9,951 feet by ExxonMobil.

MegaSurvey 3D example in the vicinity of PPL 2A52 showing a large roll-over anticline with extensional faulting.





NIGERIAN UPSTREAM PETROLEUM REGULATORY COMMISSION

For all enquires please
contact us at

**[AME-Nig-Br2025-
Sales@tgs.com](mailto:AME-Nig-Br2025-Sales@tgs.com)**