



**NIGERIAN UPSTREAM
PETROLEUM REGULATORY
COMMISSION**

Nigeria 2025

Bid Round

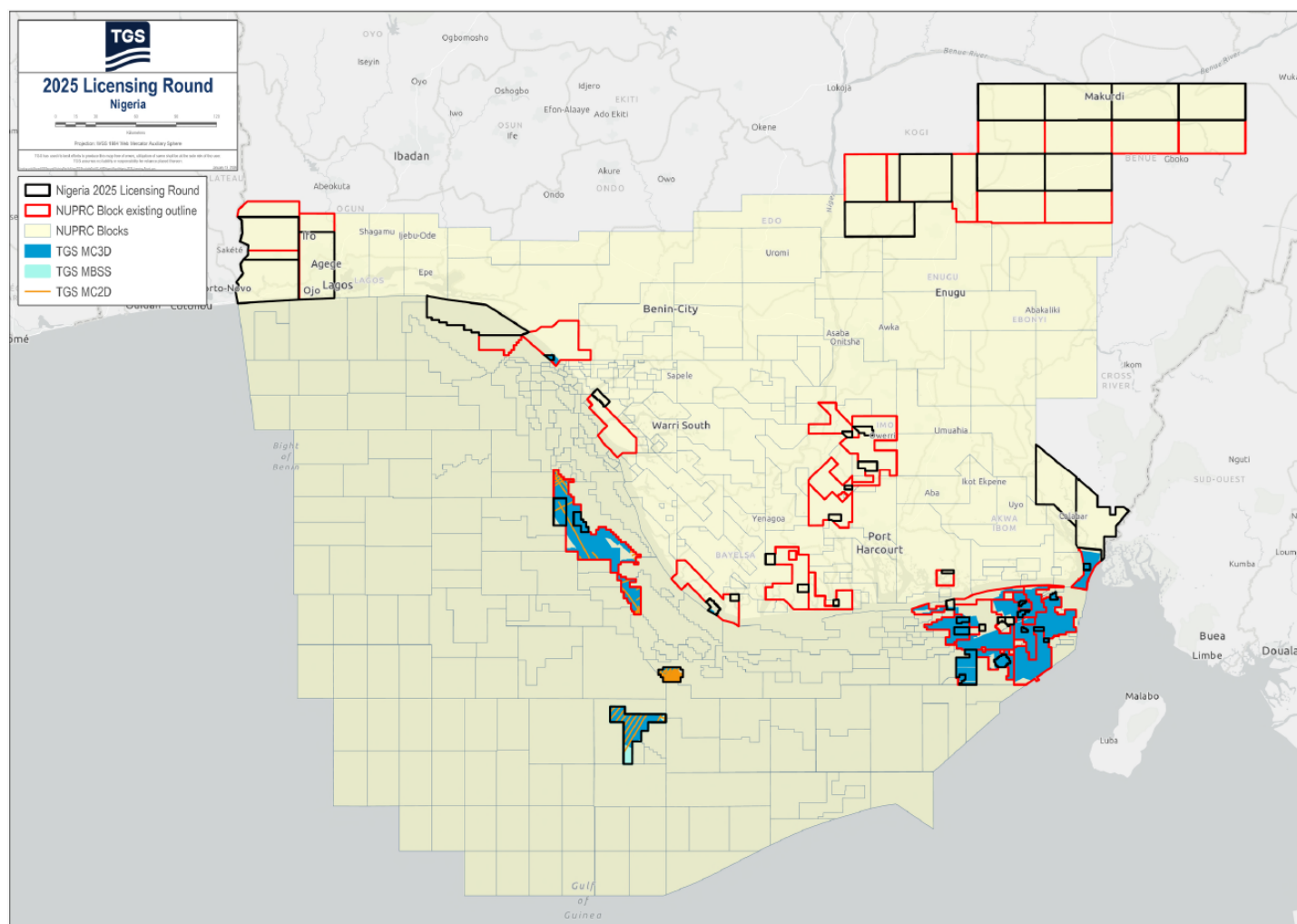
PPL – 2A53

Nigeria 2025 License Round Block Information Table



**NIGERIAN UPSTREAM
PETROLEUM REGULATORY
COMMISSION**

Block Name	Block sq. km	Data type	Data km 2D km/3D sq km	Wells	Water depth (m) min	Water Depth (m) max
PPL2A53	38	3D	343	4	18	18



Nigeria 2025 Bid Round

PPL – 2A53

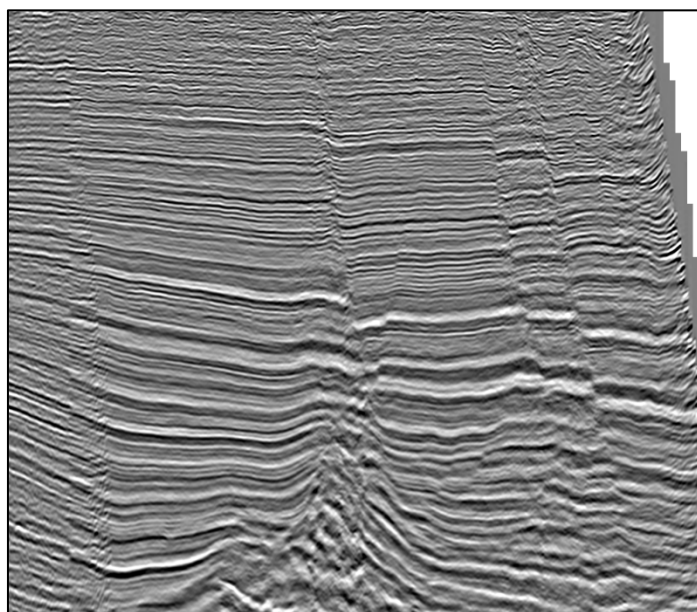
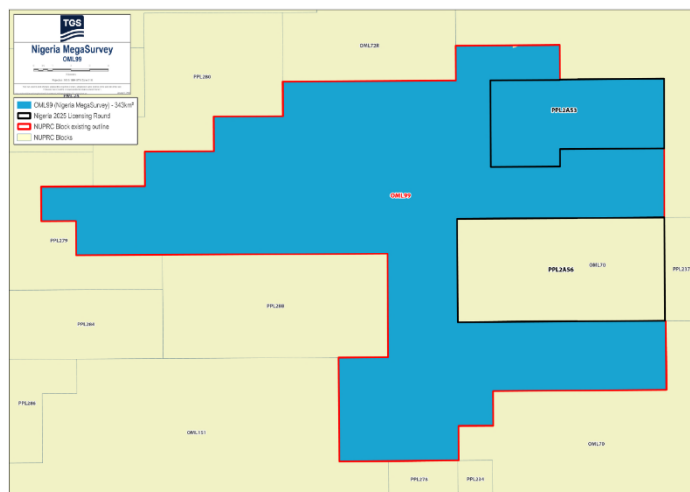


**NIGERIAN UPSTREAM
PETROLEUM REGULATORY
COMMISSION**

PPL 2A53 covers an area excised from OML 99 in accordance with the Petroleum Industry Act (PIA) 2021. PPL 2A53 is situated shallow offshore Depobelt of the eastern Niger Delta sedimentary basin.

The entire OML 99 block is covered by 343 km² of MegaSurvey 3D. The LHH-1 well was drilled in water depth of 18m between September 21, 1967 and October 20, 1967, to a total depth of 10,515 feet (MD). The well penetrated a total of 152 feet of hydrocarbon in two (2) sands. LHH1 was plugged and abandoned. OML 99 is currently operated by TotalEnergies. PPL 2A53 also includes the Ikike-2A, Ikike-4 and Ikike-10 wells.

MegaSurvey 3D example in the vicinity of PPL 2A53 showing extensional faulting and compressional features in the deeper section.





NIGERIAN UPSTREAM PETROLEUM REGULATORY COMMISSION

For all enquires please
contact us at

**[AME-Nig-Br2025-
Sales@tgs.com](mailto:AME-Nig-Br2025-Sales@tgs.com)**