



**NIGERIAN UPSTREAM
PETROLEUM REGULATORY
COMMISSION**

Nigeria 2025

Bid Round

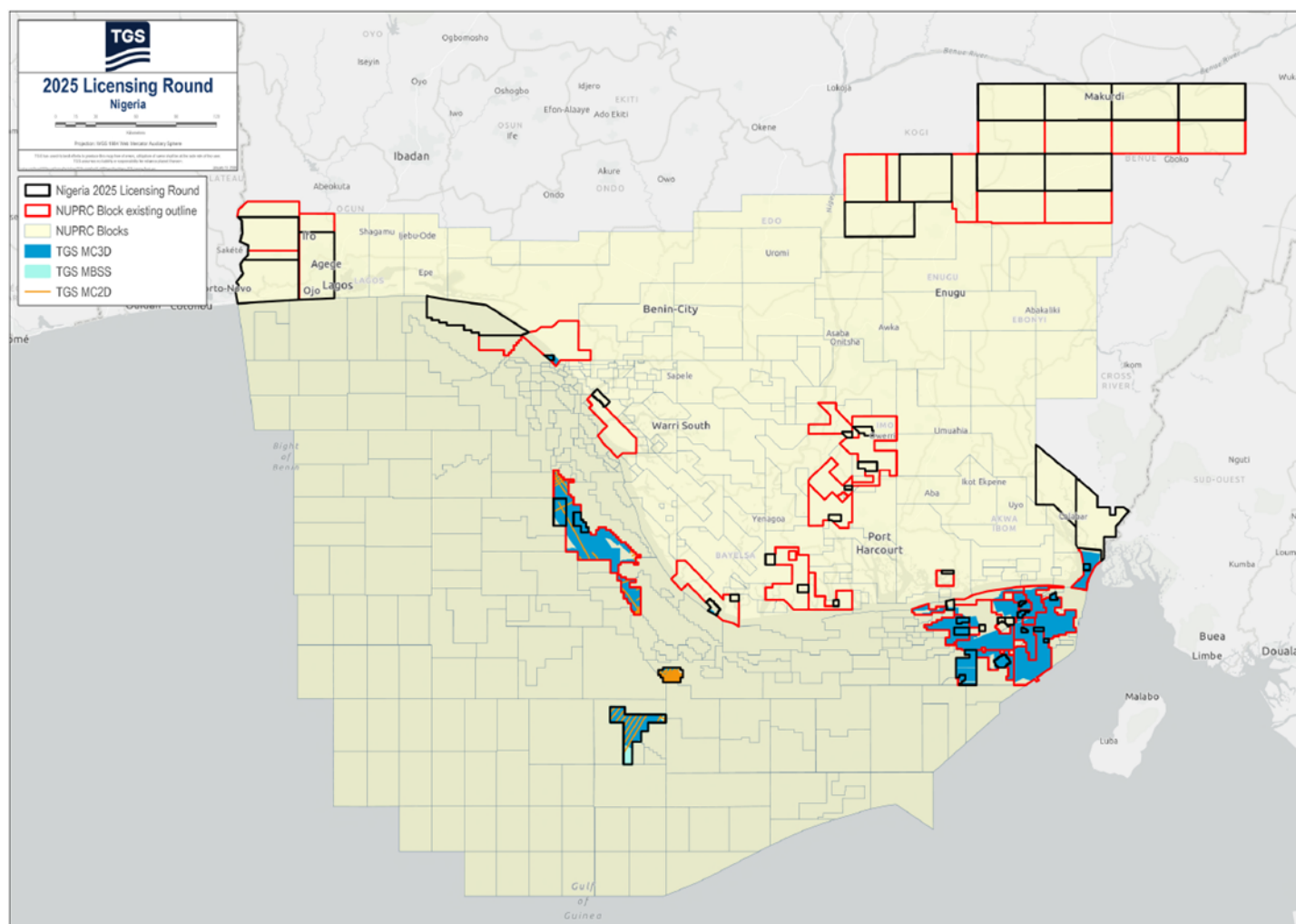
PPL – 2A55

Nigeria 2025 License Round Block Information Table



**NIGERIAN UPSTREAM
PETROLEUM REGULATORY
COMMISSION**

Block Name	Block sq. km	Data type	Data km 2D km/3D sq km	Wells	Water depth (m) min	Water Depth (m) max
PPL2A55	21	3D	656	1	30	30



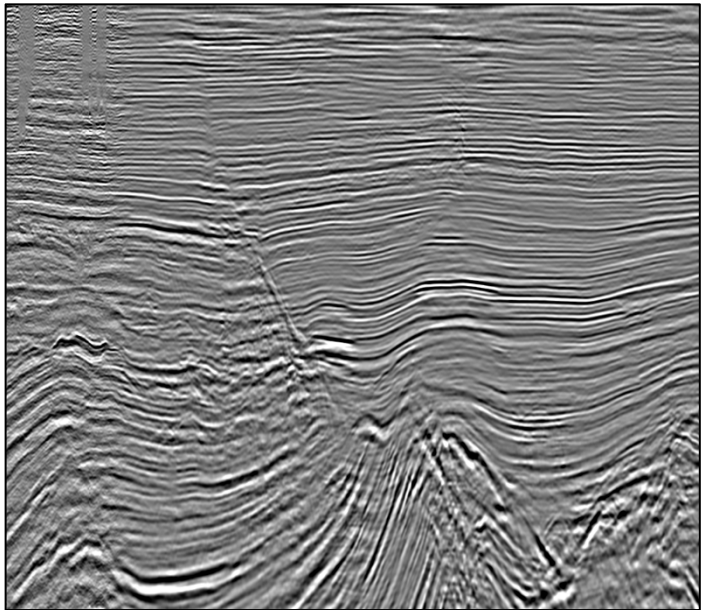
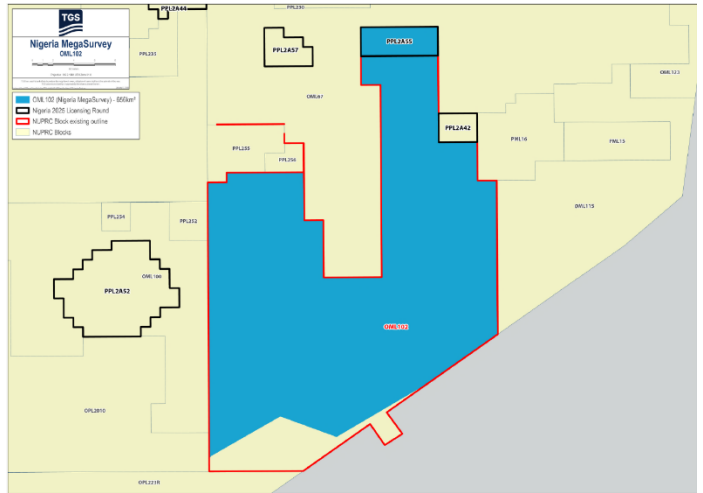
PPL – 2A55



PPL 2A55 covers an area excised from OML 102 in accordance with the Petroleum Industry Act (PIA) 2021. PPL 2A55 is situated in eastern offshore Niger Delta in 30m water depth. The entire OML 102 block is covered by 656 km² of MegaSurvey 3D.

The Usiere field is located in the Shallow Offshore Depobelt of the eastern Niger Delta sedimentary basin. The closest processing facility is Esuk Platform. Usiere-1 was drilled by NNPC between Oct 6 and Dec 10, 1981, to a total depth of 7,559 feet (MD). The well penetrated a total of 44 feet gross pay of oil in two (2) sands. The well was subsequently plugged and abandoned. OML 102 is currently operated by TotalEnergies.

MegaSurvey 3D example in the vicinity of PPL 2A55 showing extensional faulting and compressional features in the deeper section.





NIGERIAN UPSTREAM PETROLEUM REGULATORY COMMISSION

For all enquires please
contact us at

**[AME-Nig-Br2025-
Sales@tgs.com](mailto:AME-Nig-Br2025-Sales@tgs.com)**