



**NIGERIAN UPSTREAM
PETROLEUM REGULATORY
COMMISSION**

Nigeria 2025

Bid Round

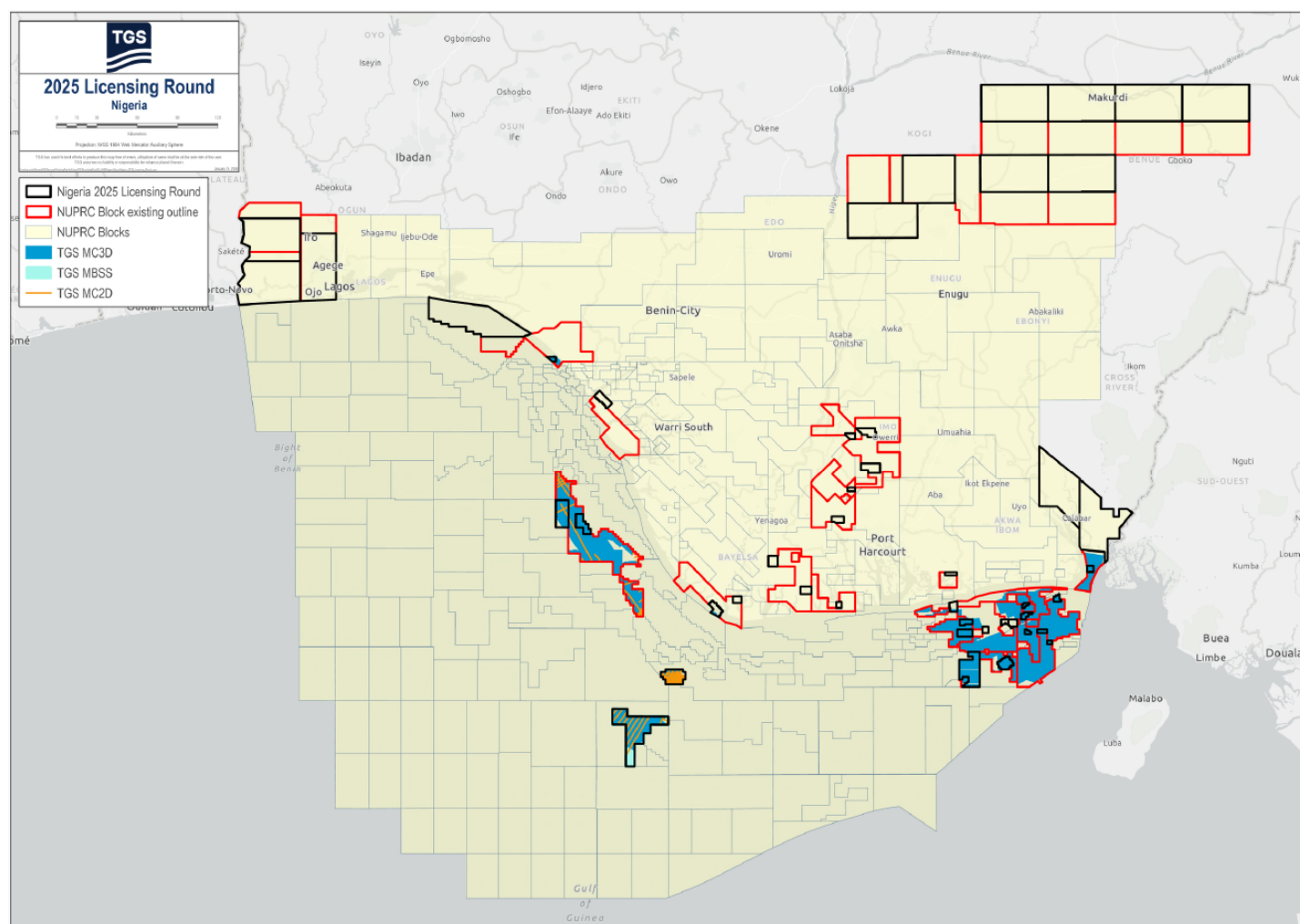
PPL – 2A56

Nigeria 2025 License Round Block Information Table



**NIGERIAN UPSTREAM
PETROLEUM REGULATORY
COMMISSION**

Block Name	Block sq. km	Data type	Data km 2D km/3D sq km	Wells	Water depth (m) min	Water Depth (m) max
PPL2A56	61	3D	627	3	30	30



Nigeria 2025 Bid Round

PPL – 2A56

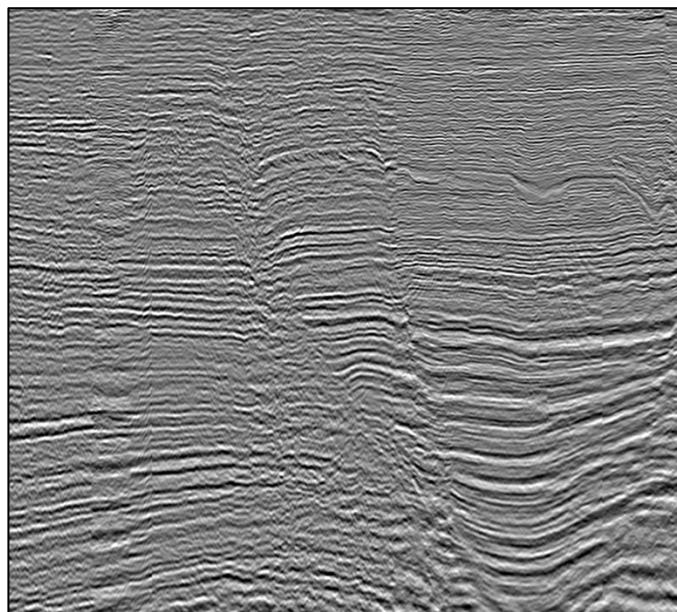
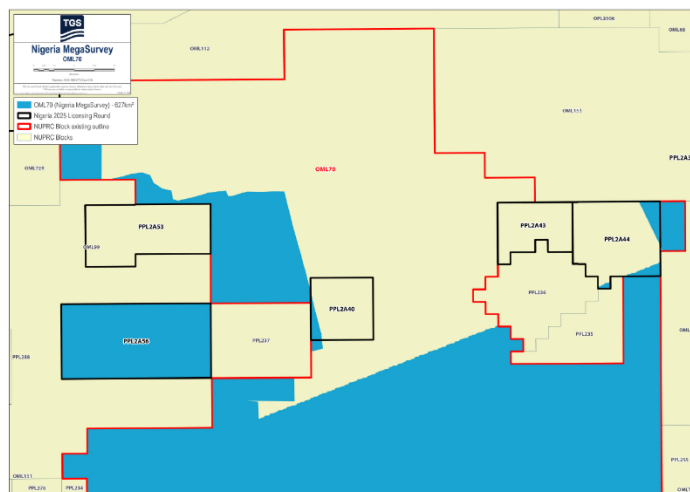


**NIGERIAN UPSTREAM
PETROLEUM REGULATORY
COMMISSION**

PPL 2A56 covers an area excised from OML 70 in accordance with the Petroleum Industry Act (PIA) 2021. PPL 2A56 is situated in the shallow offshore Eastern Niger Delta sedimentary basin. The closest processing facility is Ikike Platform (TotalEnergies).

The entire OML 70 block is covered by 627 km² of MegaSurvey 3D. The Nkanda-1 well was drilled in water depth of 76 feet by ExxonMobil on August 20, 2007, to a total depth of 11,600 feet (MD). The well penetrated a total of 95 feet of oil in two (2) sands. The well is suspended. PPL 2A56 also contains the LFF-1 and Usine-1 wells. OML 70 is currently operated by Seplat Energy.

MegaSurvey 3D example in the vicinity of PPL 2A56 showing a roll-over anticline with extensional faulting.





NIGERIAN UPSTREAM PETROLEUM REGULATORY COMMISSION

For all enquires please
contact us at

**[AME-Nig-Br2025-
Sales@tgs.com](mailto:AME-Nig-Br2025-Sales@tgs.com)**