



**NIGERIAN UPSTREAM  
PETROLEUM REGULATORY  
COMMISSION**

# **Nigeria 2025**

## **Bid Round**

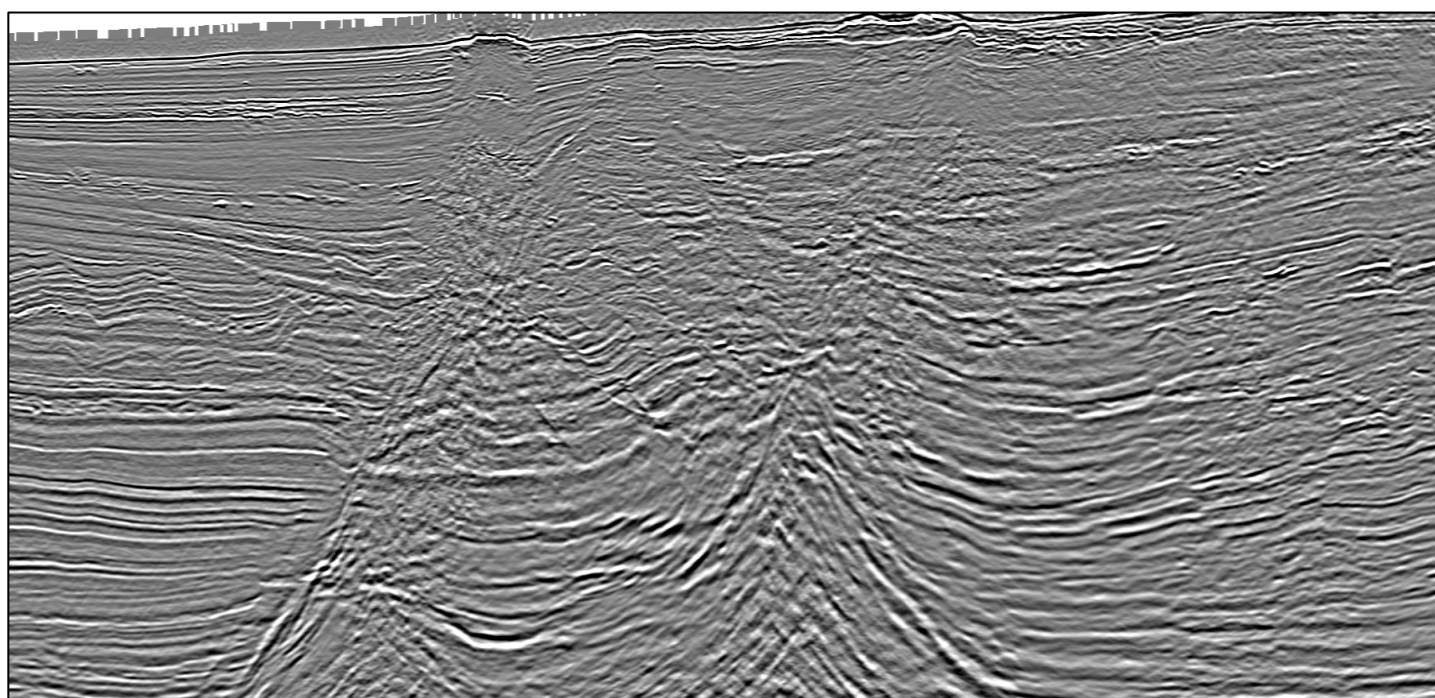
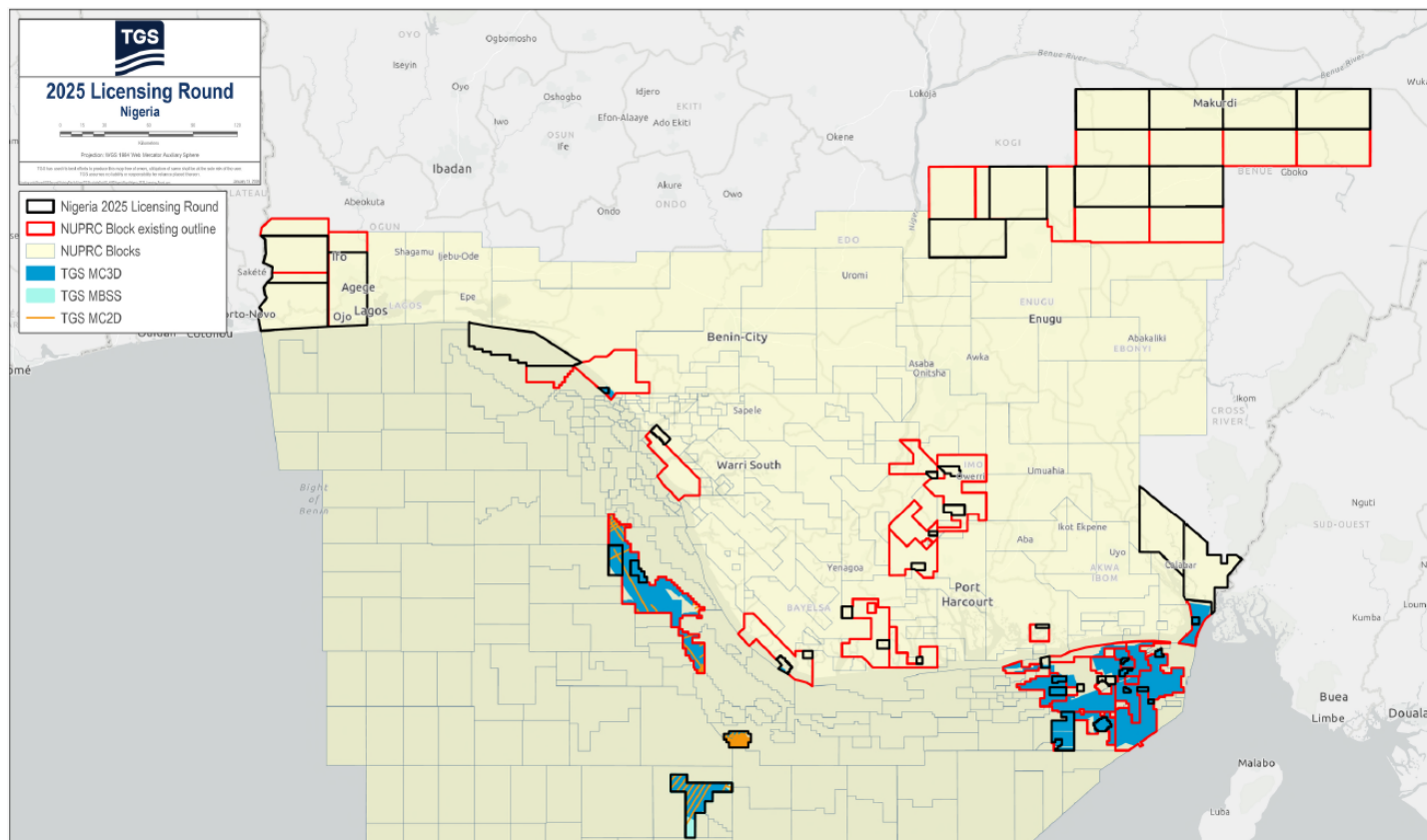
### **PPL - 2A58**

# Nigeria 2025 License Round Block Information Table



**NIGERIAN UPSTREAM  
PETROLEUM REGULATORY  
COMMISSION**

Block Name	Block sq. km	Data type	Data km 2D km/3D sq km	Wells	Water depth (m) min	Water Depth (m) max
PPL2A58	170	2D/3D	195/112	1	60	200



MegaSurvey 3D example in the vicinity of PPL 2A58. A mix of structural, stratigraphic and combination traps is present.

For all enquires please contact us at [AME-Nig-Br2025-Sales@Tgs.com](mailto:AME-Nig-Br2025-Sales@Tgs.com)

Nigeria 2025 Bid Round  
**PPL – 2A58**

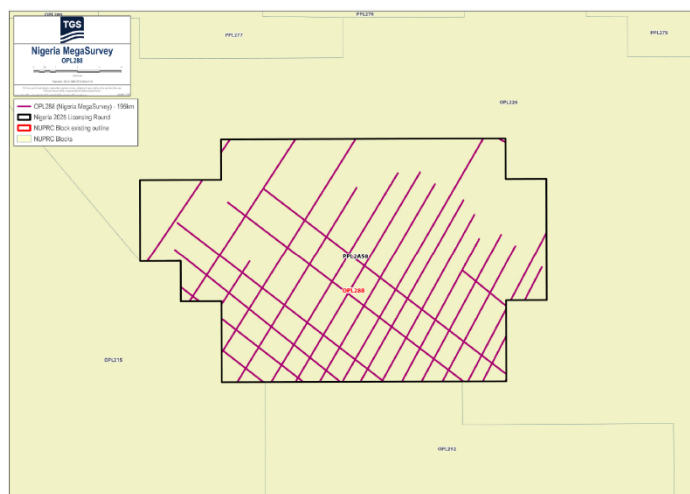
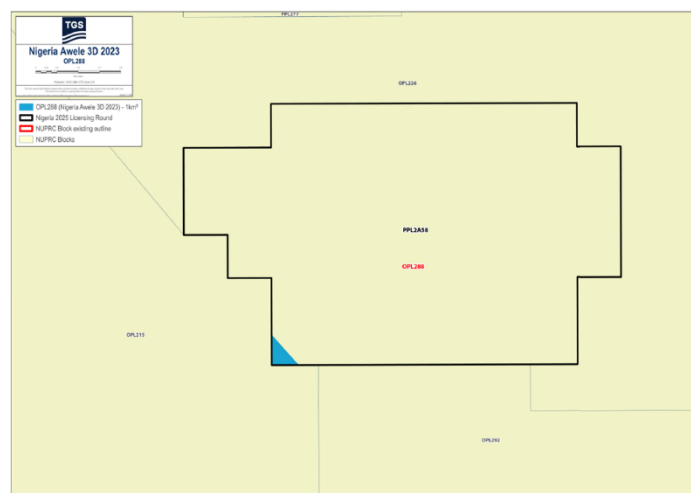
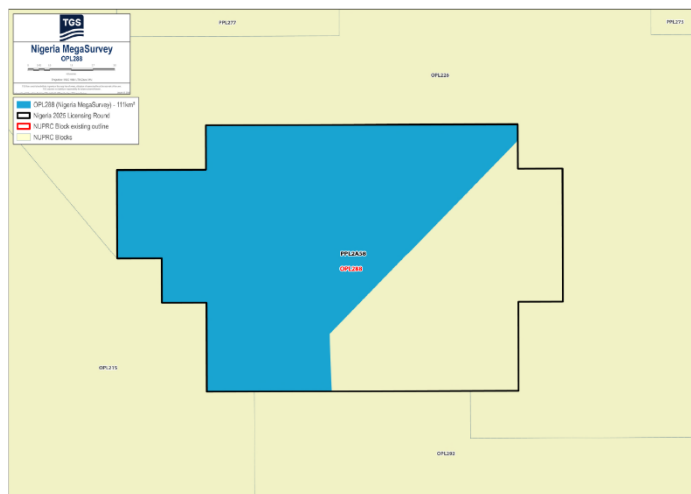


**NIGERIAN UPSTREAM  
PETROLEUM REGULATORY  
COMMISSION**

Block PPL-2A58 covers an area of 170 km<sup>2</sup> and is situated in the outer limit of the continental shelf with water depth ranging between 60 to 200m. The block contains 111 km<sup>2</sup> of MegaSurvey 3D coverage, 1km<sup>2</sup> of conventional 3D and 195 line km of MegaSurvey 2D seismic.

The block is situated in the intersection point of the western and eastern central part offshore Niger-Delta sedimentary basin. The block is 30km west of the NNPC/First E&P's Anyala Field. The block (previously operated as OML 84 by Texaco, later renamed OPL 288) was operated by Chevron Nigeria Limited. In line with the Petroleum Industry Act of 2021, the block has been converted to Petroleum Prospecting Licenses (PPL) 2A58.

The Lobia-1 well was drilled by Texaco between November 11 and December 11, 1972, to a total depth of 5,878 feet (MD). The well, drilled off structure was based on 2D seismic data interpretation, encountered oil shows and was subsequently sidetracked. The risked 2U prospective resource is estimated as 50 MMBO.





## **NIGERIAN UPSTREAM PETROLEUM REGULATORY COMMISSION**

For all enquires please  
contact us at

**[AME-Nig-Br2025-  
Sales@tgs.com](mailto:AME-Nig-Br2025-Sales@tgs.com)**